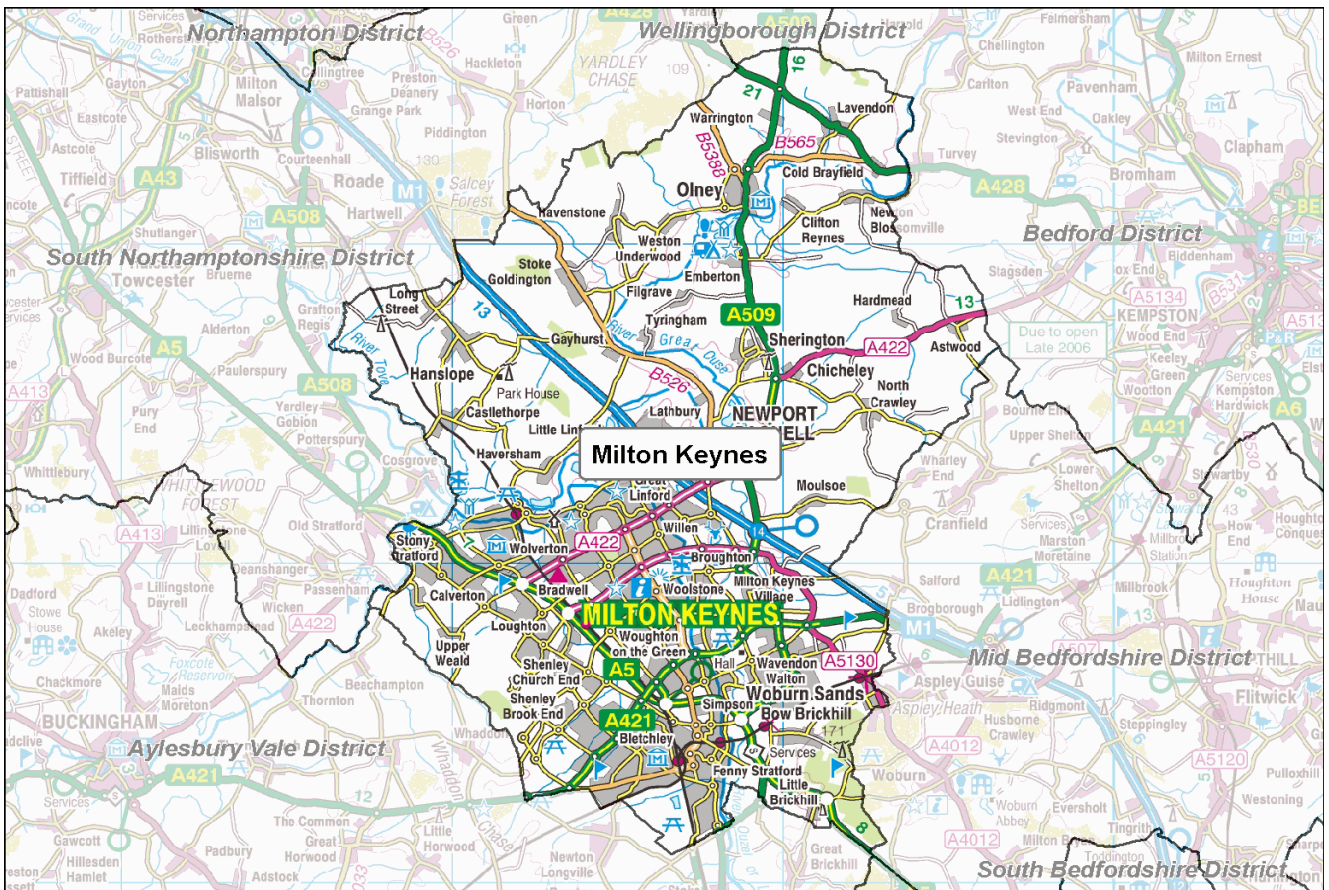


Football Participation Report:

Milton Keynes

Season 10/11



INTRODUCTION

Football has the highest participation of any team sport in the country - there are over 129,000 affiliated football teams in England, (10/11). The National Game Strategy is The FA's plan for grassroots football between 2008 and 2012 and within this, there is an ambition to grow the game by a further 20,500 teams by 2012.

Over the past 8 years, The FA has invested in significant improvements to the affiliation process which has led to the development of the County Administration System (CAS). CAS allows us to chart participation within each local authority area and this report reflects the latest participation data in your particular area. These reports are freely available and it is hoped that they will be used by local authorities, developers, clubs, leagues and other interested parties to advise current and proposed activities and investments around the game at the local level.

The FA will welcome support and advice from local partners who are similarly interested in sustaining and developing the game. Since the production of the Season 09/10 Local Area Data Reports, significant effort has been put into improving data from the County Administration System (CAS). **In some instances, this has resulted in changes to the 10/11 totals compared to how they appeared in the last version of the report.**

Whilst the data provided is robust it is not claimed to be 100% accurate. There are a number of reasons why some errors will exist and it is critical that errors are reported back to The FA and/or CFAs so we can continually improve the quality of the information available. Please report any errors or omissions to either your local County FA or Data@TheFA.com.

Each year, the County Football Associations and The Football Association will work hard to improve methods for capturing data. As a result, in some circumstances, there may appear to be shifts in participation which are directly due to refined/improved data entry rather than actual growth or decline. Please ensure that in assessing trends, you take advice from your respective County FA.

Changes in this version:

1. Population Figures updated to Mid 2009 estimates.
2. Active people data updated and taken from APS4.
3. Introduction of Youth - All Formats Category which includes:
 - a) U11 to U18 football of Male, Female and Mixed genders (mixed is included into male category for the purposes of this report).
 - b) 3v3, 4v4, 5v5, 6v6, 7v7, 9v9 and 11v11 team categories.
4. Further refinement of specific playing locations of teams (this will have resulted in some teams being reallocated into new Local Authority areas).
5. Improved validation of small sided teams (including affiliated and currently non affiliated teams).

This year a User Guide has also been produced in order to provide additional support in analysing the data, and it is recommended that this document is referred to alongside this report. The guide can be found at: https://www.fadml.com/C13/Football_Development/default.aspx and will be available from 1st March 2011.

FOOTBALL KEY FACTS - Milton Keynes

Demographics

- Milton Keynes has a population of **236,667** (Mid year estimate, Office for National Statistics, 2009) and is expected to grow to **265,600** by 2018 (Office for National Statistics, 2008).
- **13.5%** of the population in Milton Keynes come from Ethnic Minority communities compared to a national figure of **8.78%** (Census, 2001).
- **3.5%** of the adult population (16+) participate in football for at least 30 minutes once per week, as compared to a national average of **4.96%** (Sport England Active People Survey, 2010).

Clubs and Teams

- Milton Keynes has a total of **85** affiliated clubs with a total of **456** teams of which **426** play in Milton Keynes. There are also **169** small sided teams in Milton Keynes making a total of **595** teams.
- Of the **595** teams operating in Milton Keynes, **98 (16.5%)** are adult teams, **217 (36.5%)** are youth teams (all formats), **111 (18.7%)** are Mini-Soccer teams and **169 (28.4%)** are small sided.
- **70.4%** or **231** of the **328** Youth and Mini-soccer teams play in a club that has achieved a Charter Standard Award as compared to a national average of **70.4%**.
- The number of teams **has decreased by 53 teams** overall in Milton Keynes from season 09/10 to season 10/11.

This comprises:

- an increase of 2 adult teams.
- an increase of 48 youth teams (all formats).
- a decrease of 24 Mini-Soccer teams.
- a decrease of 79 small sided teams.

Milton Keynes

Conversion Rates

The following table and graphs show football conversion rates in the authority compared to Regional and National rates. These are calculated by comparing the number of persons playing football to the relevant population age group.

We estimate the number of individuals playing football by multiplying the number of teams by the average number of players involved in the different forms of football. We assume the following:

- 18 players are involved in an 11-a-side squad
- 10 players in a Mini-Soccer team squad
- 12 players in a 9 v 9 small-sided team squad
- 9 players in a 7 v 7 small-sided team squad
- 8 players in 6 v 6 and 5 v 5 small-sided team squads
- 6 players in a 4 v 4 small-sided team squad

These numbers are then expressed as a proportion of the relevant population. This creates a percentage of the population at each age group involved in playing football, called a 'conversion rate'. We can then compare these conversion rates to Regional and National averages.

Ages 5 to 44, male and female, of the local area population have been used to calculate the conversion rates on this page.

Table 1: Teams, players and conversion rates for Milton Keynes, South East and England

	Adult 11-a-side		Youth All Formats		Mini- Soccer	Adult Small Sided	All Forms
	Male	Female	Male	Female	Mixed	Male	Total
Milton Keynes							
No of Teams 10/11	90	8	191	26	111	169	595
No of Teams 09/10	87	9	153	16	135	190	648
Variance	3.5%	-11.1%	24.8%	62.5%	-17.8%	-11.1%	-8.2%
Players							
Players 10/11	1,620	144	3,207	399	1,110	1,352	7832
Players 09/10	1,305	135	2,295	240	1,350	1,520	6845
Conversion Rate 10/11	3.2%	0.3%	25.6%	3.4%	9.2%	2.7%	5.8%
Conversion Rate 09/10	2.9%	0.3%	24.9%	2.7%	11.2%	3.4%	5.7%
Variance	0.3%	0.0%	0.7%	0.7%	-2.0%	-0.7%	0.1%
South East							
Conversion Rates 10/11	5.5%	0.2%	23.5%	2.3%	9.6%	1.7%	6.0%
Conversion Rates 09/10	4.8%	0.2%	26.6%	2.0%	9.1%	2.2%	5.8%
Variance	0.7%	0.0%	-3.1%	0.3%	0.5%	-0.4%	0.2%
England							
Conversion Rate 10/11	5.4%	0.3%	21.4%	2.3%	9.1%	1.8%	5.9%
Conversion Rate 09/10	4.8%	0.2%	23.3%	2.0%	8.0%	1.9%	5.4%
Variance	0.6%	0.0%	-1.9%	0.3%	1.1%	-0.1%	0.5%

Notes: All conversion rate figures in this table are subject to rounding, so whilst the seasonal figures in the table may not imply a change, the variance may indicate a drop or increase as the 4th January data cut figures may differ.

Milton Keynes

Figure 1: Conversion rates by type of football for Milton Keynes 10/11 as set against regional and national averages.

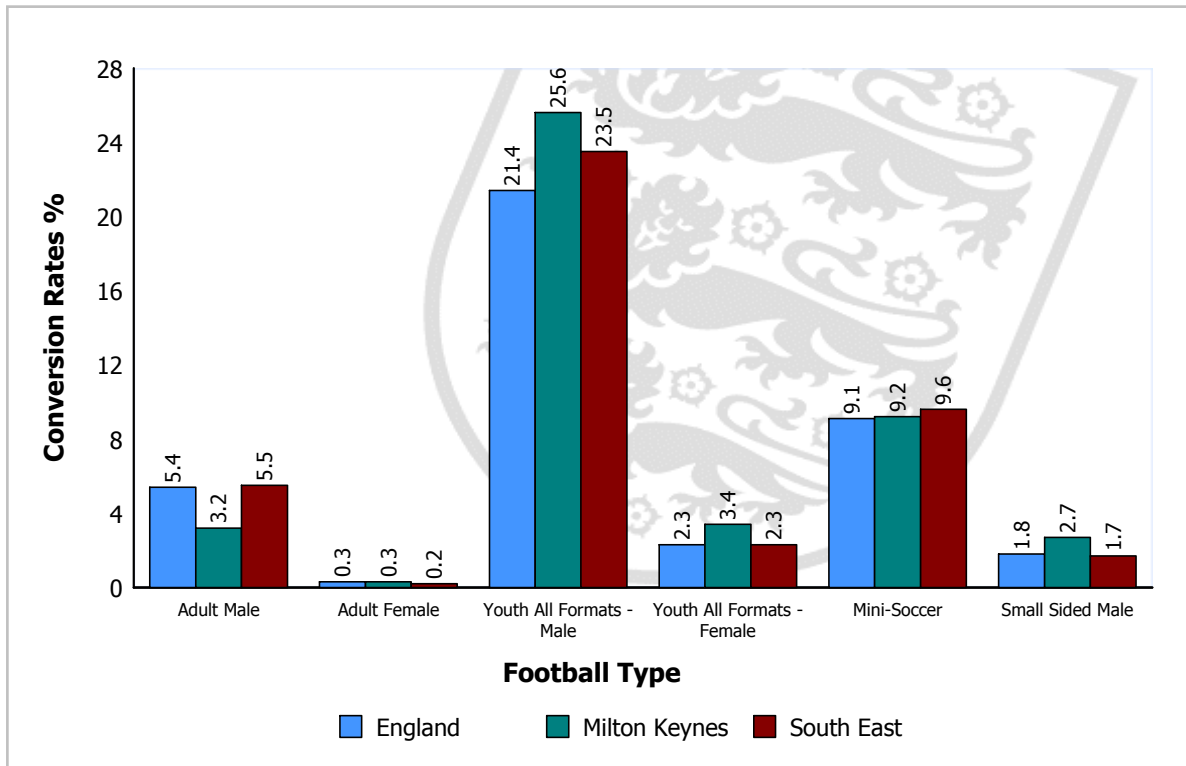
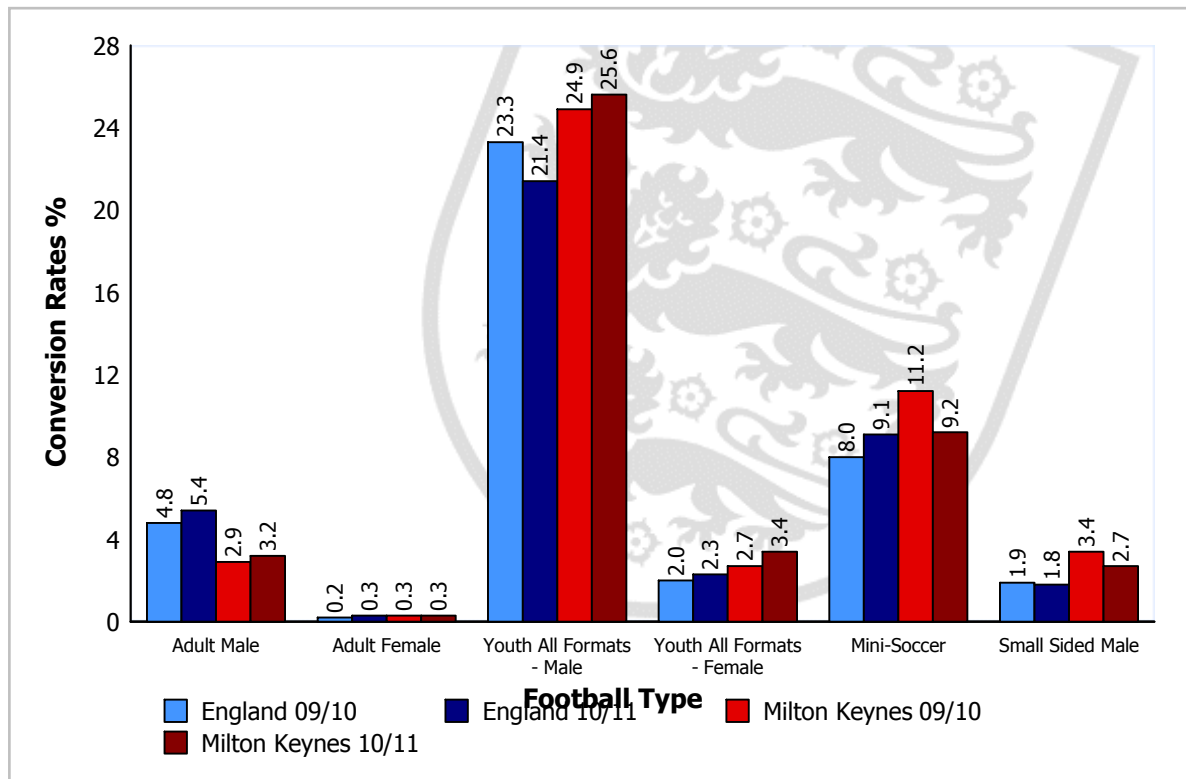


Figure 2: Conversion rate trends for different football types for Milton Keynes 09/10 and 10/11 as set against national averages.



Please Note: Season 09/10 figures for Youth - All Formats reflect Youth 11 v 11 only.

Milton Keynes

Local Authority Comparison of Conversion Rates

A comparison of conversion rates of Local Authorities can be made between those similar in nature by utilising the National Statistics 2009 Area Classification of Local Authorities (provided by the Office for National Statistics). The classification groups Local Authorities based on population characteristics.

Table 2 below shows the conversion rates for Milton Keynes compared to those most similar to it, that is, members of the same subgroup:

Basildon, Bedford, Bexley, Broxbourne, Crawley, Dartford, Forest Heath, Gloucester, Gosport, Gravesham, Harlow, Havering, Ipswich, Medway, Northampton, Peterborough, Rushmoor, Stevenage, Swindon, Thurrock, Wellingborough, Worcester

Table 2: Comparison of Local Authorities in the same subgroup as Milton Keynes.

Football Type		Conversion Target ¹	Milton Keynes Conversion Rate	Variance	Growth Potential ²
Adult 11-a-side	Male	6.7	3.2	-3.5	99
	Female	0.3	0.3	0.0	2
Youth ² (all formats)	Male	25.0	25.6	0.6	0
	Female	2.5	3.4	0.9	0
Mini-Soccer	Mixed	11.1	9.2	-1.8	24
Adult Small Sided	Male	3.3	2.7	-0.7	42

¹ The target is the value of the upper quartile (75th Percentile) of conversion rates of all local authorities in the same subgroup. The conversion target is calculated for each type of football.

² Growth Potential represents the number of teams for each football type that the local authority would need to develop to reach the conversion target value. For Youth (all formats) the growth potential has been calculated on an average number of players across all formats.

Local Authorities are encouraged to discuss growth potential targets with their County Development Manager to determine a realistic programme of intervention, supported by The FA, capable of increasing participation over an agreed period.

Where the Local Authority has participation rates already above the targets consideration should be given as to how these rates can be sustained long term.

CLUBS

Milton Keynes Clubs

- In Milton Keynes the club to team ratio is 1:5.0 (i.e. each club runs on average 5.0 teams). This compares to a national ratio of 1:2.9 and a regional ratio of 1:3.3.
- 41 of the youth clubs in Milton Keynes run youth 11-a-side teams only and do not have a mini-soccer team.
- There are 13 clubs fielding both youth and adult teams.
- 67.1% of clubs in Milton Keynes have adult teams, compared to national and regional averages of 72.5% and 73.7% respectively.
- 68.4% of adult-only clubs in Milton Keynes have only one team compared to the national average of 76.0%.

Appendix 1 shows Milton Keynes based clubs with numbers of associated teams for each form of football during season 10/11. Finally, it shows the status of clubs that have been awarded The FA Charter Standard award and the level of that award.

Charter Standard

Of the 85 clubs in Milton Keynes, 27 have achieved Charter Standard. The level of status obtained by these clubs is outlined in Table 3.

Table 3: Clubs with Charter Standard in Milton Keynes

Status	Milton Keynes		England	
	Number	Percentage	Number	Percentage
Community Club	1	1.2%	515	1.7%
Development Club	2	2.4%	521	1.8%
Charter Standard	24	28.2%	4379	14.7%
Total	27	31.8%	5415	18.2%

In terms of teams, 70.4% of youth and mini-soccer teams play within a club of Charter Standard status. This compares to a national average of 70.4% with a National Game Strategy target of 75% of youth and mini-soccer teams playing within a Charter Standard Club by 2012.

Milton Keynes

TEAMS

Milton Keynes Teams

- There are a total of 426 teams playing competitive football in Milton Keynes excluding small-sided teams.
- According to the CAS data, there are 34 female teams playing in Milton Keynes. This is 8.0% of the total number of teams.
- The peak youth age is U12, with 37 teams playing at this level.

Table 4 shows the number of Milton Keynes based teams for each form of football.

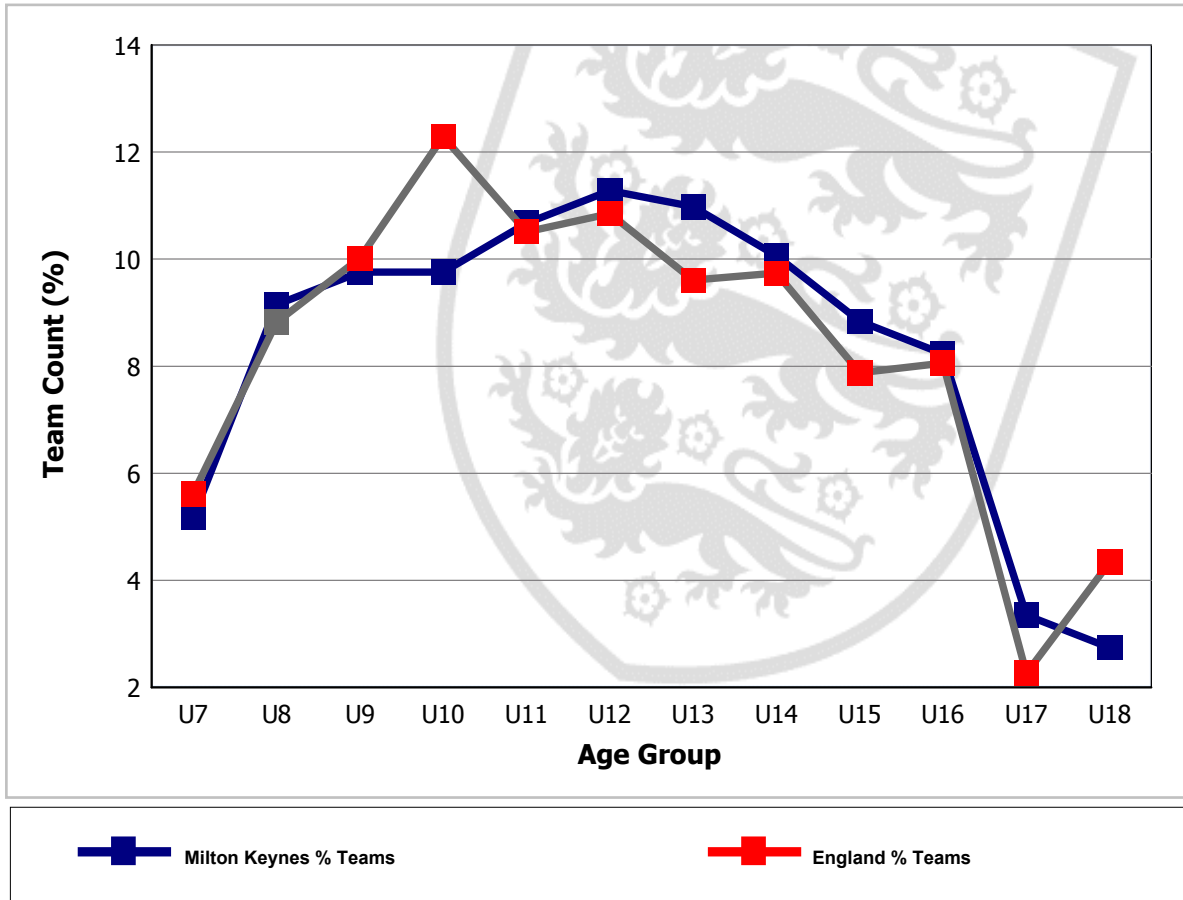
Table 4: Number of teams at each age group

Age Group	Total No. of Teams	No. of Mixed Teams	No. of Male Teams	No. of Female Teams
U7	17	17	0	0
U8	30	30	0	0
U9	32	32	0	0
U10	32	32	0	0
U11	35	0	34	1
U12	37	0	32	5
U13	36	0	31	5
U14	33	0	28	5
U15	29	0	24	5
U16	27	0	23	4
U17	11	0	10	1
U18	9	0	9	0
Open Aged	91	0	83	8
Veterans	7	0	7	0
Totals	426	111	281	34

Milton Keynes

The following figure plots the change in the percentage of youth teams across age groups in Milton Keynes and highlights a peak number of teams in the U12 age group. Where there is no line on the graph for 'Teams within LA %', there are no youth teams playing in the Local Authority. The national percentages for each age group are also included for comparison.

Figure 4: Individual youth teams as a proportion of all U18 teams in Milton Keynes



Milton Keynes

LEAGUES

Leagues with Milton Keynes Teams

There are 26 leagues containing teams from Milton Keynes (see table 5).

- In total 16 of these leagues are adult leagues.
- There are 15 teams in Milton Keynes that have not been assigned to a league. Where teams have not been assigned to a league, this data could potentially be highlighting teams playing in 'friendlies' only or it could be highlighting data missing from CAS.

Table 5 summarises the main coverage of football in Milton Keynes, in respect of the age ranges of teams, numbers of teams and leagues in which they participate.

Table 5: League structures in Milton Keynes

League	Age Group	No. of Teams in League	No. of Milton Keynes Teams in League	% of Teams in League Playing in Milton Keynes	Charter Standard and Respect
Bedfordshire Under 18 County Youth Football League	U13	1	1	100.0	
BOBI	U12	1	1	100.0	CSL, Respect
BOBI	U16	3	1	33.3	CSL, Respect
BOBI	Open Aged	26	5	19.2	CSL, Respect
Bucks Girls League	U10	10	2	20.0	CSL, Respect
Bucks Girls League	U11	4	2	50.0	CSL, Respect
Bucks Girls League	U12	19	3	15.8	CSL, Respect
Bucks Girls League	U13	10	3	30.0	CSL, Respect
Bucks Girls League	U14	14	4	28.6	CSL, Respect
Bucks Girls League	U15	11	4	36.4	CSL, Respect
Bucks Girls League	U16	13	2	15.4	CSL, Respect
Chiltern Church Junior League	U14	4	1	25.0	Respect
Chiltern Church Junior League	U15	4	1	25.0	Respect
Chiltern Church Junior League	U16	6	1	16.7	Respect
E.J.P Sports Seven-a-Side League	Open Aged	1	1	100.0	
Football League	Open Aged	77	1	1.3	
Friendlies/Tournaments	U16	3	1	33.3	
Friendlies/Tournaments	Open Aged	29	2	6.9	
Leighton & District Sunday Football League	Open Aged	51	2	3.9	Respect
MDH Girls League	U16	16	1	6.3	CSL, Respect

Milton Keynes

League	Age Group	No. of Teams in League	No. of Milton Keynes Teams in League	% of Teams in League Playing in Milton Keynes	Charter Standard and Respect
MDH Girls League	U17	4	1	25.0	CSL, Respect
Milton Keynes & Border Counties Youth League	U7	2	1	50.0	Respect
Milton Keynes & Border Counties Youth League	U8	1	1	100.0	Respect
Milton Keynes & Border Counties Youth League	U12	29	19	65.5	Respect
Milton Keynes & Border Counties Youth League	U13	31	23	74.2	Respect
Milton Keynes & Border Counties Youth League	U14	39	24	61.5	Respect
Milton Keynes & Border Counties Youth League	U15	33	23	69.7	Respect
Milton Keynes & Border Counties Youth League	U16	37	19	51.4	Respect
Milton Keynes & Border Counties Youth League	U17	20	10	50.0	Respect
Milton Keynes & Border Counties Youth League	U18	9	4	44.4	Respect
Milton Keynes & District Development League	U7	35	16	45.7	Respect
Milton Keynes & District Development League	U8	51	28	54.9	Respect
Milton Keynes & District Development League	U9	50	31	62.0	Respect
Milton Keynes & District Development League	U10	55	28	50.9	Respect
Milton Keynes & District Development League	U11	52	30	57.7	Respect
Milton Keynes & District Development League	U12	25	11	44.0	Respect
Milton Keynes & District Development League	U13	16	6	37.5	Respect
Milton Keynes & District Development League	U14	1	1	100.0	Respect
Milton Keynes Sunday League	Open Aged	29	28	96.6	Respect
Milton Keynes Veterans League	Open Aged	9	4	44.4	
Milton Keynes Veterans League	Veterans	17	7	41.2	
North Berks Boys & Girls League	U12	1	1	100.0	
North Bucks & District League	Open Aged	44	25	56.8	Respect
Northants Youth Football League	U18	1	1	100.0	
Premier Academy League	U9	18	1	5.6	
Premier Academy League	U10	19	1	5.3	
Premier Academy League	U11	18	1	5.6	
Premier Academy League	U12	18	1	5.6	
Premier Academy League	U13	18	1	5.6	
Premier Academy League	U14	18	1	5.6	
Premier Academy League	U16	20	1	5.0	

Milton Keynes

League	Age Group	No. of Teams in League	No. of Milton Keynes Teams in League	% of Teams in League Playing in Milton Keynes	Charter Standard and Respect
Premier Academy League	U18	26	1	3.8	
Shenley Leisure Centre 6-a-Side League	Open Aged	1	1	100.0	
South East Women's Combination League	Open Aged	12	1	8.3	
Southern Counties Floodlit Youth League	U18	27	2	7.4	Respect
Southern Region Women's Football League	Open Aged	22	1	4.5	
Spartan South Midlands Football League	Open Aged	92	9	9.8	Respect
Suburban Football League	Open Aged	57	1	1.8	Respect
Thames Valley Counties Womens League	Open Aged	39	4	10.3	Respect
The Hertfordshire and Borders Churches Football League	Open Aged	18	1	5.6	Respect
United Counties Football League	Open Aged	67	3	4.5	Respect
Count of Leagues: 26					

Please Note:

- 1). Count of teams may differ from the front page, since some teams may not have a league allocated.
- 2). CSL - indicates Charter Standard League.
- 3). If a league appears more than once for an agegroup, it may be that teams have been applied to different/duplicated league entities.

SUMMARY

This report has identified the status of football in Milton Keynes for 10/11 season. The report is part of an ongoing process that will allow the data to be updated and used in the development of football locally.

In closing The Football Association would like to thank you for any feedback that you may have on this report. Please convey any errors or omissions to either your local County FA or Data@TheFA.com.

Milton Keynes

APPENDIX 1

Table 6 - Summary of football clubs in Milton Keynes

DE - Club existed in previous season, but not in the current season.

SS - Refers to Clubs with only Small Sided teams

Club Name	Status	10/11 Teams					Charter Standard 10/11
		Adult	Youth All Formats	Mini	* Foreign Team Count	Total This LA	
AFC Brickhill Rangers		0	4	1	0	5	
AFC Santander		2	0	0	0	2	
Berks & Bucks Centre of Excellence (Disability)		0	2	0	0	2	
Bletchley Bridge		1	0	0	0	1	
Bletchley Colts Youth		0	1	1	0	2	Charter
Bletchley Shamrocks		0	3	2	0	5	
Bletchley Town		2	0	0	0	2	
Boca Shenley		1	0	0	0	1	
Bow Brickhill		1	0	0	0	1	
Brook End Colts		0	11	4	0	15	Charter
Brookfield Rangers		0	7	3	0	10	Charter
Bunkychollox	SS	0	0	0	0	0	
Castlethorpe		2	0	0	0	2	
Celtic		1	0	0	0	1	
City Belles		1	3	0	0	4	Charter
City Colts		1	10	4	0	15	Charter
Clean Slate		1	0	0	0	1	
Cranfield Colts		0	2	0	14	2	Charter
CS Athletic		1	0	0	0	1	
Deanshanger Athletic	DE	0	0	0	0	0	
Deanshanger Athletic Veterans	DE	0	0	0	0	0	
Deanshanger Colts Mini Soccer	DE	0	0	0	0	0	Charter
Denbigh Hall Sports & Social		1	0	0	0	1	
E & H		1	0	0	0	1	
Emberton Athletic Youth		0	1	1	0	2	Charter
FC Lifesearch		1	0	0	0	1	
FC MMIX		1	0	0	0	1	

Milton Keynes

Club Name	Status	10/11 Teams					Charter Standard 10/11
		Adult	Youth All Formats	Mini	Foreign * Team Count	Total This LA	
Fenny Stratford Youth	DE	0	0	0	0	0	
Great Holm Steel	DE	0	0	0	0	0	
Great Horwood		2	5	4	0	11	Charter
Great Linford		3	9	10	0	22	Charter
Great Mile Ash		1	0	0	0	1	
Hanslope		2	0	0	0	2	
Hanslope Hornets		0	3	1	0	4	
Hanslope Wanderers		1	0	0	0	1	
Heelands Rangers		0	8	3	0	11	Charter
Inter Inchley	DE	0	0	0	0	0	
Kiln Farm		2	0	0	0	2	
Kings Arms		1	0	0	0	1	
Los Toros	DE	0	0	0	0	0	
Loughton Athletic		1	0	0	0	1	
Loughton Manor		1	0	0	0	1	Charter
Milton Keynes 87		1	0	0	0	1	
Milton Keynes Athletic		0	1	0	0	1	Charter
Milton Keynes Churches		1	0	0	0	1	
Milton Keynes City		0	13	5	0	18	Charter
Milton Keynes Dons FC		10	12	3	0	25	
MK College	DE	0	0	0	0	0	
MK Community		1	0	0	0	1	
MK Dynamos		1	0	0	0	1	
MK Grogg	DE	0	0	0	0	0	
Mk Harriers		0	1	0	0	1	
MK Santos Youth	DE	0	0	0	0	0	
MK Titans		3	0	0	0	3	
MK Wanderers		3	10	6	0	19	Comm.
Netherfield Saints		0	5	0	0	5	
New Bradwell St Peter		2	1	0	0	3	
New City Saints		1	5	2	0	8	Charter

Milton Keynes

Club Name	Status	10/11 Teams					Charter Standard 10/11
		Adult	Youth All Formats	Mini	Foreign * Team Count	Total This LA	
Newport Jerry Hatricks		1	0	0	0	1	
Newport Pagnell Town		3	13	5	0	21	Devel.
Newport Pagnell Youth		0	3	0	0	3	Charter
North Marston Junior	DE	0	0	0	0	0	
Old Bradwell United		3	0	0	0	3	
Old Stratford		0	3	3	0	6	
Old Stratford Seniors		1	0	0	0	1	
Old Swan (Bletchley)	DE	0	0	0	0	0	
Olney Town		6	11	6	0	23	
Open University		3	0	0	0	3	
Parkside Community Sports		1	0	1	0	2	
Pitstone & Ivinghoe Juniors		0	1	0	9	1	Charter
Punjab United		1	0	0	0	1	
Roman Rangers Youth		0	3	6	0	9	
Scot Youth		0	5	2	0	7	
Sherington		1	0	0	0	1	Charter
Southside United		0	7	5	0	12	Charter
St Monicas Boys & Girls	DE	0	0	0	0	0	
Stanton Manor	DE	0	0	0	0	0	
Stantonbury Social		1	0	0	0	1	
Steeple Claydon		1	0	0	0	1	
Steven Eagell Toyota		1	0	0	0	1	
Stoke Hammond MK		1	0	0	0	1	
Stoke Hammond Sports Club		1	0	0	0	1	
Stoke Hammond Wanderers		2	0	0	0	2	
Stony Stratford Town		5	4	0	0	9	Charter
Swan Fenny	DE	0	0	0	0	0	
Swan Hotel		1	0	0	0	1	
Swans (Milton Keynes Village)	DE	0	0	0	0	0	
Tattenhoe		0	8	11	0	19	Devel.
Tattenhoe Youth		0	1	7	0	8	Charter

Milton Keynes

Club Name	Status	10/11 Teams					Charter Standard 10/11
		Adult	Youth All Formats	Mini	Foreign Team Count *	Total This LA	
Three Trees		1	0	0	0	1	
Trade2u		1	0	0	0	1	
Two Mile Ash Sports		0	2	1	0	3	
United MK		1	6	1	0	8	Charter
Water Eaton AFC		2	0	0	0	2	
Water Eaton Youth AFC		0	6	6	0	12	
Waterhall Stars		0	4	0	0	4	
West Bletchley		0	3	0	0	3	Charter
Wicken Sports	DE	0	0	0	0	0	
Willen		2	12	7	0	21	Charter
Willen Rangers	DE	0	0	0	0	0	
Wishing Well Veterans		1	0	0	0	1	
Woburn Lionesses		0	2	0	7	2	Charter
Woburn Lions Junior	DE	0	0	0	0	0	Charter
Wolverton Tigermoths		0	6	0	0	6	Charter
Wolverton Town		2	0	0	0	2	
Woughton	DE	0	0	0	0	0	
Totals		98	217	111	30	426	

* Foreign Team Count - these are the teams affiliated to Milton Keynes clubs, but playing in neighbouring Local Authorities. These teams are **not** added to the team total for this authority.

Milton Keynes

APPENDIX 2

This section provides a brief overview of Milton Keynes's population structure and characteristics.

Demographic Profile

According to the mid-2009 population estimate data from the Office for National Statistics, Milton Keynes has a population of 236,667. 117,905 of Milton Keynes's population, 49.8%, are female compared to a national average of 50.8%.

For statistical purposes we define the number of people in a district who could potentially play football as the "relevant population". For Adult teams, the relevant population is males and females aged between 16 and 44 years, for Youth teams (all formats), the relevant population is males and females aged between 10 and 18 years, and for Mini Soccer, the relevant population is males and females aged 6 to 9 years. Table 6 outlines the numbers and percentages of the population in Milton Keynes for the population age groups relevant to football.

Table 6: Milton Keynes relevant population age groups

Population Group	Milton Keynes Relevant Population		% of Milton Keynes Relevant Population		England Relevant Population	
	Male	Female	Male	Female	Male	Female
Adult - Aged 16 to 44 Years	50,565	48,693	37.3%	35.9%	36.6%	36.0%
Youth - Aged 10 to 18 Years	12,535	11,662	9.3%	8.6%	9.8%	9.3%
Mini Soccer - Aged 6 to 9 Years	12,024		8.9%		8.5%	

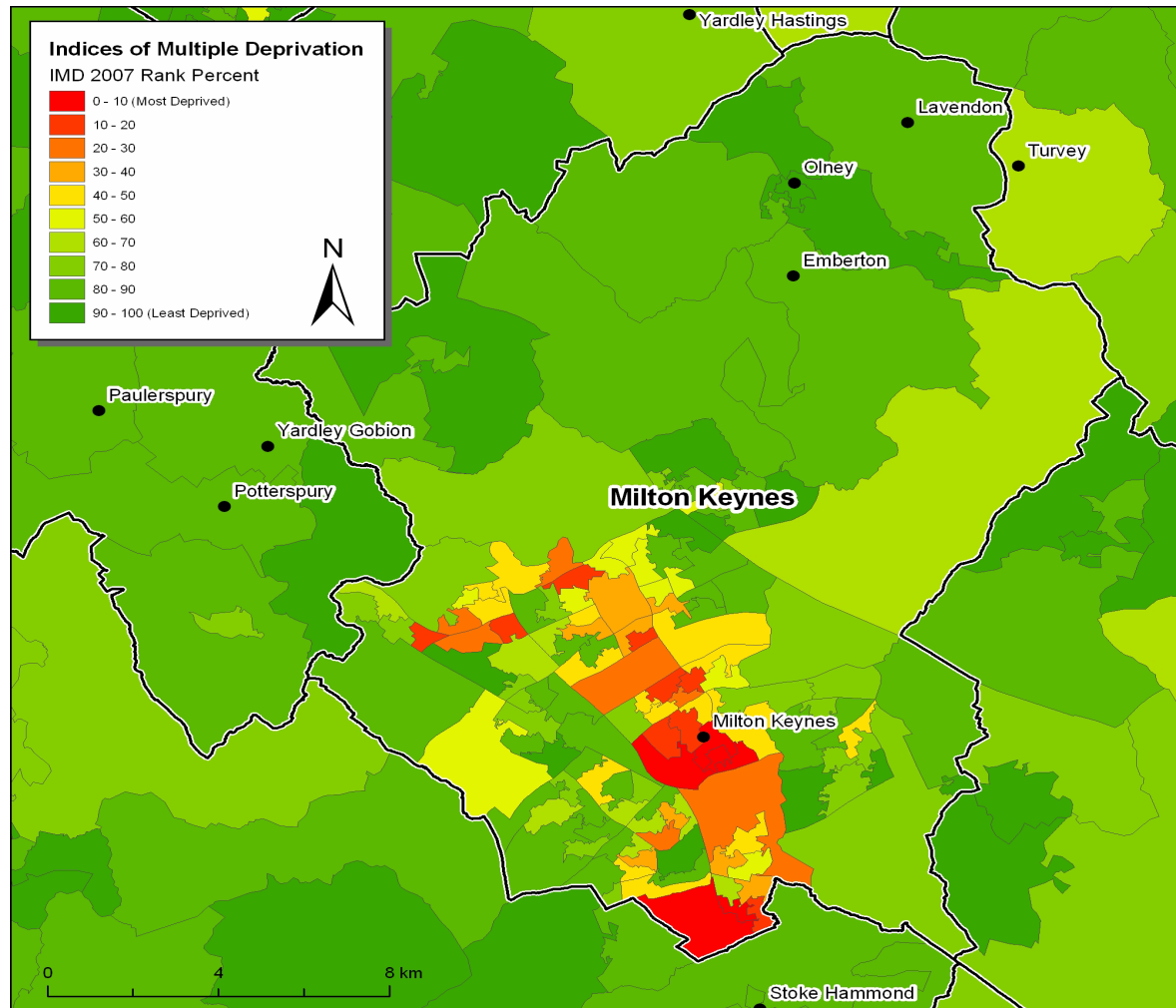
In Milton Keynes 13.5% of the population come from Ethnic Minority (EM) groups, which is higher than that of England as a whole at 8.8%. The largest EM group in the authority is Indian at 3.0%, followed by African at 2.7%; the corresponding national averages are 1.9% and 1.0% respectively. (Source: 2001 Census)

Milton Keynes

Index of Multiple Deprivation (IMD)

The Index of Multiple Deprivation (2007) provides a nationally accepted means by which to identify the levels of deprivation in England.

Figure 5: Milton Keynes IMD ranking indicating main settlements



Milton Keynes

Active People Survey Data

The Active People Survey (APS), commissioned by Sport England, is the largest sports survey undertaken in Europe. The survey provides detail on the level of participation in sport and physical activity by adults (16+) for each Local Authority in England. This data is based on a minimum sample size of 500 interviews in each area.

The data from APS 4 (October 2009 - October 2010) provides:

- 1) Percentage of the adult population participating in football for at least 30 minutes at least once a month.
- 2) Percentage of the adult population participating in football for at least 30 minutes at least once a week.

The results for Milton Keynes are shown below (where blank this indicates that data is unavailable due to small sample size):

	APS 4 - Football	
	1 x month	1 x week
Milton Keynes	7.6%	3.5%
National Average	7.33%	4.96%

This football specific data can be compared against general participation across all sports in the Local Authority area by accessing the following link to Local Sport Profile data http://www.sportengland.org/research/local_sport_profiles.aspx

Please refer to the Football Participation Reports User Guide 2010/11 for more detail on the interpretation of this data. The guide can be found at: https://www.fadml.com/C13/Football_Development/default.aspx and will be available from 1st March 2011.

National Statistics 2001 Area Classification for Local Authorities

Additional information can be found on the Area Classification clusters that were used to group Local Authorities using the website below:

http://www.statistics.gov.uk/about/methodology_by_theme/area_classification/la/default.asp

