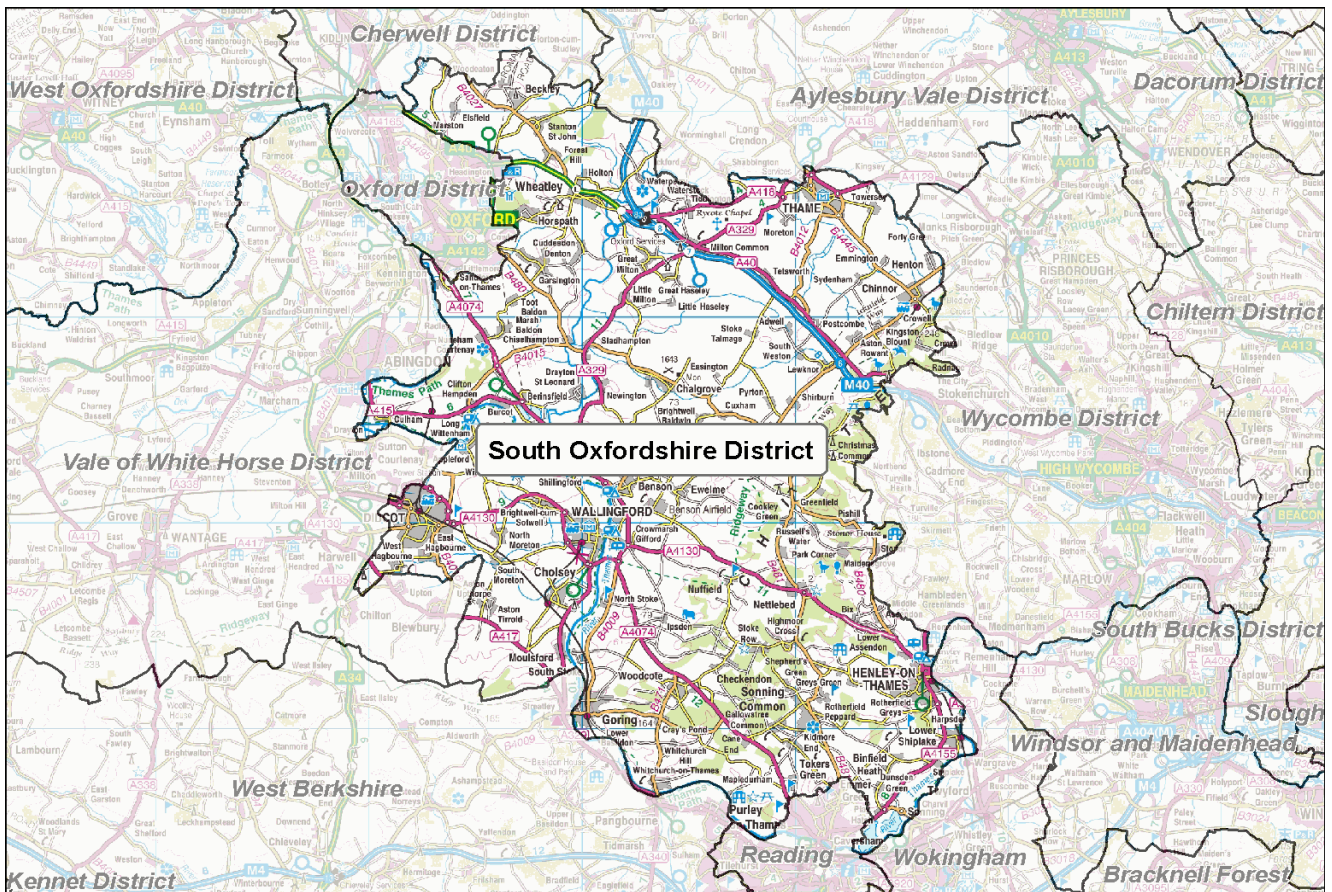


# Football Participation Report:

## South Oxfordshire

Season 10/11



## INTRODUCTION

Football has the highest participation of any team sport in the country - there are over 129,000 affiliated football teams in England, (10/11). The National Game Strategy is The FA's plan for grassroots football between 2008 and 2012 and within this, there is an ambition to grow the game by a further 20,500 teams by 2012.

Over the past 8 years, The FA has invested in significant improvements to the affiliation process which has led to the development of the County Administration System (CAS). CAS allows us to chart participation within each local authority area and this report reflects the latest participation data in your particular area. These reports are freely available and it is hoped that they will be used by local authorities, developers, clubs, leagues and other interested parties to advise current and proposed activities and investments around the game at the local level.

The FA will welcome support and advice from local partners who are similarly interested in sustaining and developing the game. Since the production of the Season 09/10 Local Area Data Reports, significant effort has been put into improving data from the County Administration System (CAS). **In some instances, this has resulted in changes to the 10/11 totals compared to how they appeared in the last version of the report.**

Whilst the data provided is robust it is not claimed to be 100% accurate. There are a number of reasons why some errors will exist and it is critical that errors are reported back to The FA and/or CFAs so we can continually improve the quality of the information available. Please report any errors or omissions to either your local County FA or [Data@TheFA.com](mailto:Data@TheFA.com).

Each year, the County Football Associations and The Football Association will work hard to improve methods for capturing data. As a result, in some circumstances, there may appear to be shifts in participation which are directly due to refined/improved data entry rather than actual growth or decline. Please ensure that in assessing trends, you take advice from your respective County FA.

### Changes in this version:

1. Population Figures updated to Mid 2009 estimates.
2. Active people data updated and taken from APS4.
3. Introduction of Youth - All Formats Category which includes:
  - a) U11 to U18 football of Male, Female and Mixed genders (mixed is included into male category for the purposes of this report).
  - b) 3v3, 4v4, 5v5, 6v6, 7v7, 9v9 and 11v11 team categories.
4. Further refinement of specific playing locations of teams (this will have resulted in some teams being reallocated into new Local Authority areas).
5. Improved validation of small sided teams (including affiliated and currently non affiliated teams).

This year a User Guide has also been produced in order to provide additional support in analysing the data, and it is recommended that this document is referred to alongside this report. The guide can be found at: [https://www.fadml.com/C13/Football\\_Development/default.aspx](https://www.fadml.com/C13/Football_Development/default.aspx) and will be available from 1st March 2011.

## FOOTBALL KEY FACTS - South Oxfordshire

### Demographics

- South Oxfordshire has a population of **130,572** (Mid year estimate, Office for National Statistics, 2009) and is expected to grow to **136,200** by 2018 (Office for National Statistics, 2008).
- **5.4%** of the population in South Oxfordshire come from Ethnic Minority communities compared to a national figure of **8.78%** (Census, 2001).
- **4.7%** of the adult population (16+) participate in football for at least 30 minutes once per week, as compared to a national average of **4.96%** (Sport England Active People Survey, 2010).

### Clubs and Teams

- South Oxfordshire has a total of **75** affiliated clubs with a total of **227** teams of which **227** play in South Oxfordshire. There are also **30** small sided teams in South Oxfordshire making a total of **257** teams.
- Of the **257** teams operating in South Oxfordshire, **85 (33.1%)** are adult teams, **93 (36.2%)** are youth teams (all formats), **49 (19.1%)** are Mini-Soccer teams and **30 (11.7%)** are small sided.
- **62.7%** or **89** of the **142** Youth and Mini-soccer teams play in a club that has achieved a Charter Standard Award as compared to a national average of **70.4%**.
- The number of teams **has decreased by 32 teams** overall in South Oxfordshire from season 09/10 to season 10/11.

This comprises:

- a decrease of 4 adult teams.
- an increase of 15 youth teams (all formats).
- a decrease of 6 Mini-Soccer teams.
- a decrease of 37 small sided teams.

# South Oxfordshire

## Conversion Rates

The following table and graphs show football conversion rates in the authority compared to Regional and National rates. These are calculated by comparing the number of persons playing football to the relevant population age group.

We estimate the number of individuals playing football by multiplying the number of teams by the average number of players involved in the different forms of football. We assume the following:

- 18 players are involved in an 11-a-side squad
- 10 players in a Mini-Soccer team squad
- 12 players in a 9 v 9 small-sided team squad
- 9 players in a 7 v 7 small-sided team squad
- 8 players in 6 v 6 and 5 v 5 small-sided team squads
- 6 players in a 4 v 4 small-sided team squad

These numbers are then expressed as a proportion of the relevant population. This creates a percentage of the population at each age group involved in playing football, called a 'conversion rate'. We can then compare these conversion rates to Regional and National averages.

Ages 5 to 44, male and female, of the local area population have been used to calculate the conversion rates on this page.

Table 1: Teams, players and conversion rates for South Oxfordshire, South East and England

	Adult 11-a-side		Youth All Formats		Mini- Soccer	Adult Small Sided	All Forms
	Male	Female	Male	Female	Mixed	Male	Total
<b>South Oxfordshire</b>							
No of Teams 10/11	<b>83</b>	<b>2</b>	<b>83</b>	<b>10</b>	<b>49</b>	<b>30</b>	<b>257</b>
No of Teams 09/10	85	4	76	2	55	52	289
Variance	-2.4%	-50.0%	9.2%	400.0%	-10.9%	-42.3%	-11.1%
Players 10/11	<b>1,494</b>	<b>36</b>	<b>1,494</b>	<b>117</b>	<b>490</b>	<b>240</b>	<b>3871</b>
Players 09/10	1,275	60	1,140	30	550	416	3471
Conversion Rate 10/11	<b>6.4%</b>	<b>0.2%</b>	<b>21.1%</b>	<b>1.9%</b>	<b>7.7%</b>	<b>1.0%</b>	5.9%
Conversion Rate 09/10	5.3%	0.2%	22.9%	0.7%	8.3%	1.7%	5.4%
Variance	1.1%	-0.1%	-1.7%	1.3%	-0.6%	-0.7%	0.5%
<b>South East</b>							
Conversion Rates 10/11	<b>5.5%</b>	<b>0.2%</b>	<b>23.5%</b>	<b>2.3%</b>	<b>9.6%</b>	<b>1.7%</b>	<b>6.0%</b>
Conversion Rates 09/10	4.8%	0.2%	26.6%	2.0%	9.1%	2.2%	5.8%
Variance	0.7%	0.0%	-3.1%	0.3%	0.5%	-0.4%	0.2%
<b>England</b>							
Conversion Rate 10/11	<b>5.4%</b>	<b>0.3%</b>	<b>21.4%</b>	<b>2.3%</b>	<b>9.1%</b>	<b>1.8%</b>	<b>5.9%</b>
Conversion Rate 09/10	4.8%	0.2%	23.3%	2.0%	8.0%	1.9%	5.4%
Variance	0.6%	0.0%	-1.9%	0.3%	1.1%	-0.1%	0.5%

Notes: All conversion rate figures in this table are subject to rounding, so whilst the seasonal figures in the table may not imply a change, the variance may indicate a drop or increase as the 4th January data cut figures may differ.

# South Oxfordshire

Figure 1: Conversion rates by type of football for South Oxfordshire 10/11 as set against regional and national averages.

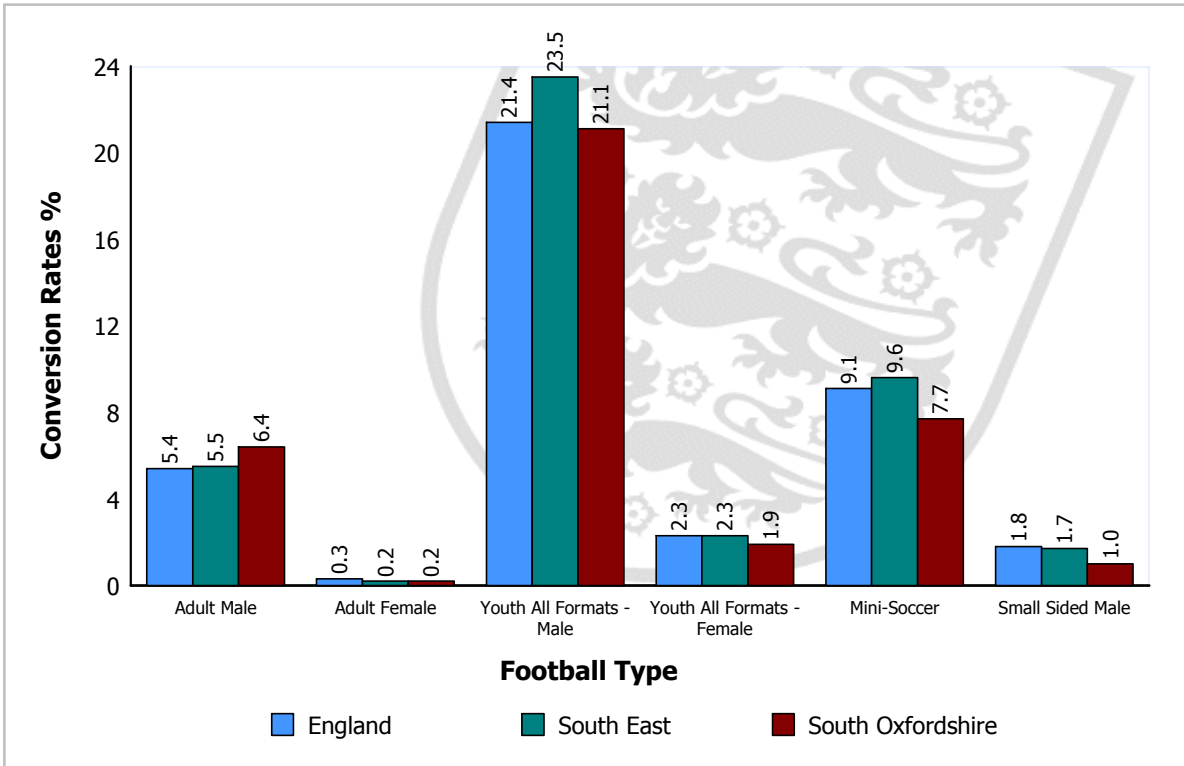
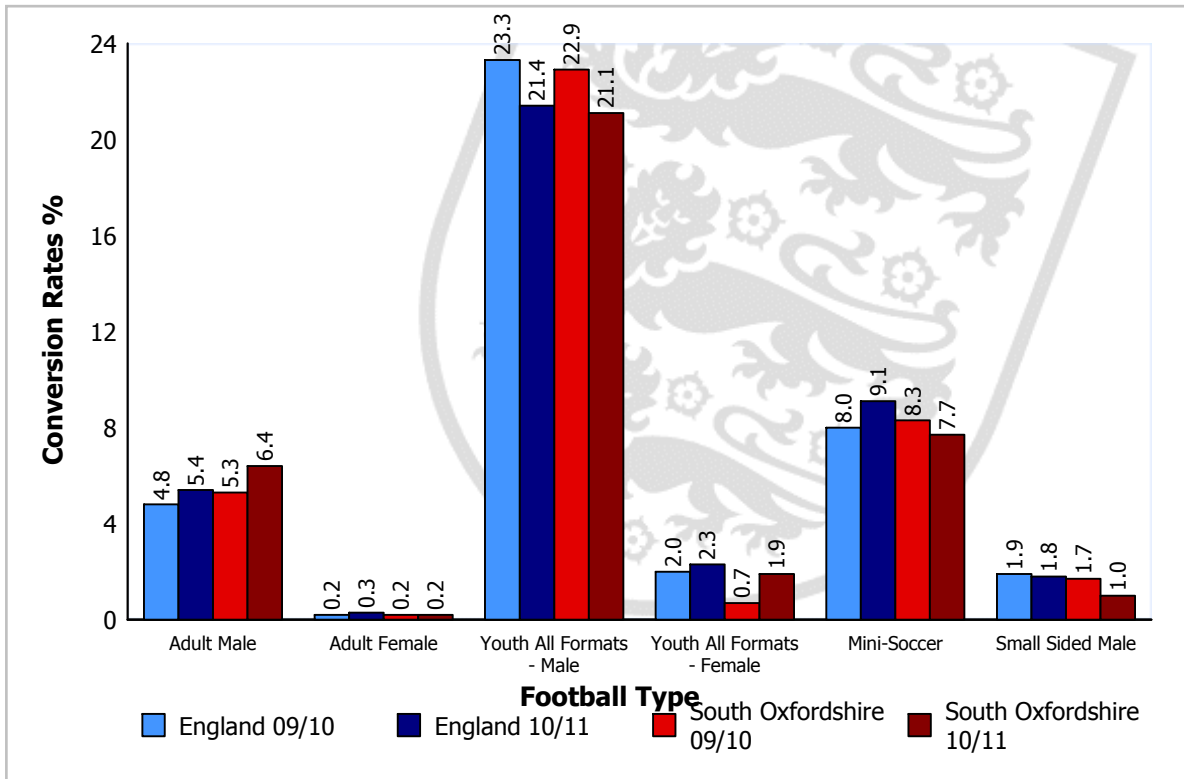


Figure 2: Conversion rate trends for different football types for South Oxfordshire 09/10 and 10/11 as set against national averages.



Please Note: Season 09/10 figures for Youth - All Formats reflect Youth 11 v 11 only.

# South Oxfordshire

## Local Authority Comparison of Conversion Rates

A comparison of conversion rates of Local Authorities can be made between those similar in nature by utilising the National Statistics 2009 Area Classification of Local Authorities (provided by the Office for National Statistics). The classification groups Local Authorities based on population characteristics.

Table 2 below shows the conversion rates for South Oxfordshire compared to those most similar to it, that is, members of the same subgroup:

*Aylesbury Vale, Basingstoke and Deane, Bracknell Forest, Brentwood, Chelmsford, Chiltern, Dacorum, East Hampshire, East Hertfordshire, Elmbridge, Epping Forest, Epsom and Ewell, Guildford, Hart, Hertsmere, Horsham, Kennet, Mid Sussex, Mole Valley, North Hertfordshire, North Wiltshire, Reigate and Banstead, Rochford, Runnymede, Sevenoaks, South Bucks, South Cambridgeshire, Spelthorne, St. Albans, Surrey Heath, Tandridge, Test Valley, Three Rivers, Tonbridge and Malling, Tunbridge Wells, Uttlesford, Vale of White Horse, Waverley, West Berkshire, Winchester, Windsor and Maidenhead, Woking, Wokingham, Wycombe*

Table 2: Comparison of Local Authorities in the same subgroup as South Oxfordshire.

Football Type		Conversion Target <sup>1</sup>	South Oxfordshire Conversion Rate	Variance	Growth Potential <sup>2</sup>
Adult 11-a-side	Male	7.3	6.4	-0.9	13
	Female	0.3	0.2	-0.2	3
Youth <sup>2</sup> (all formats)	Male	28.3	21.1	-7.2	113
	Female	3.0	1.9	-1.1	12
Mini-Soccer	Mixed	11.9	7.7	-4.1	28
Adult Small Sided	Male	2.1	1.0	-1.0	31

<sup>1</sup> The target is the value of the upper quartile (75th Percentile) of conversion rates of all local authorities in the same subgroup. The conversion target is calculated for each type of football.

<sup>2</sup> Growth Potential represents the number of teams for each football type that the local authority would need to develop to reach the conversion target value. For Youth (all formats) the growth potential has been calculated on an average number of players across all formats.

Local Authorities are encouraged to discuss growth potential targets with their County Development Manager to determine a realistic programme of intervention, supported by The FA, capable of increasing participation over an agreed period.

Where the Local Authority has participation rates already above the targets consideration should be given as to how these rates can be sustained long term.

## CLUBS

### South Oxfordshire Clubs

- In South Oxfordshire the club to team ratio is 1:3.0 (i.e. each club runs on average 3.0 teams). This compares to a national ratio of 1:2.9 and a regional ratio of 1:3.3.
- 28 of the youth clubs in South Oxfordshire run youth 11-a-side teams only and do not have a mini-soccer team.
- There are 6 clubs fielding both youth and adult teams.
- 70.7% of clubs in South Oxfordshire have adult teams, compared to national and regional averages of 72.5% and 73.7% respectively.
- 58.5% of adult-only clubs in South Oxfordshire have only one team compared to the national average of 76.0%.

Appendix 1 shows South Oxfordshire based clubs with numbers of associated teams for each form of football during season 10/11. Finally, it shows the status of clubs that have been awarded The FA Charter Standard award and the level of that award.

### Charter Standard

Of the 75 clubs in South Oxfordshire, 9 have achieved Charter Standard. The level of status obtained by these clubs is outlined in Table 3.

Table 3: Clubs with Charter Standard in South Oxfordshire

Status	South Oxfordshire		England	
	Number	Percentage	Number	Percentage
Community Club	3	4.0%	515	1.7%
Development Club	4	5.3%	521	1.8%
Charter Standard	2	2.7%	4379	14.7%
<b>Total</b>	<b>9</b>	<b>12.0%</b>	<b>5415</b>	<b>18.2%</b>

In terms of teams, 62.7% of youth and mini-soccer teams play within a club of Charter Standard status. This compares to a national average of 70.4% with a National Game Strategy target of 75% of youth and mini-soccer teams playing within a Charter Standard Club by 2012.

# South Oxfordshire

---

## TEAMS

### South Oxfordshire Teams

- There are a total of 227 teams playing competitive football in South Oxfordshire excluding small-sided teams.
- According to the CAS data, there are 12 female teams playing in South Oxfordshire. This is 5.3% of the total number of teams.
- The peak youth age is U11, with 21 teams playing at this level.

Table 4 shows the number of South Oxfordshire based teams for each form of football.

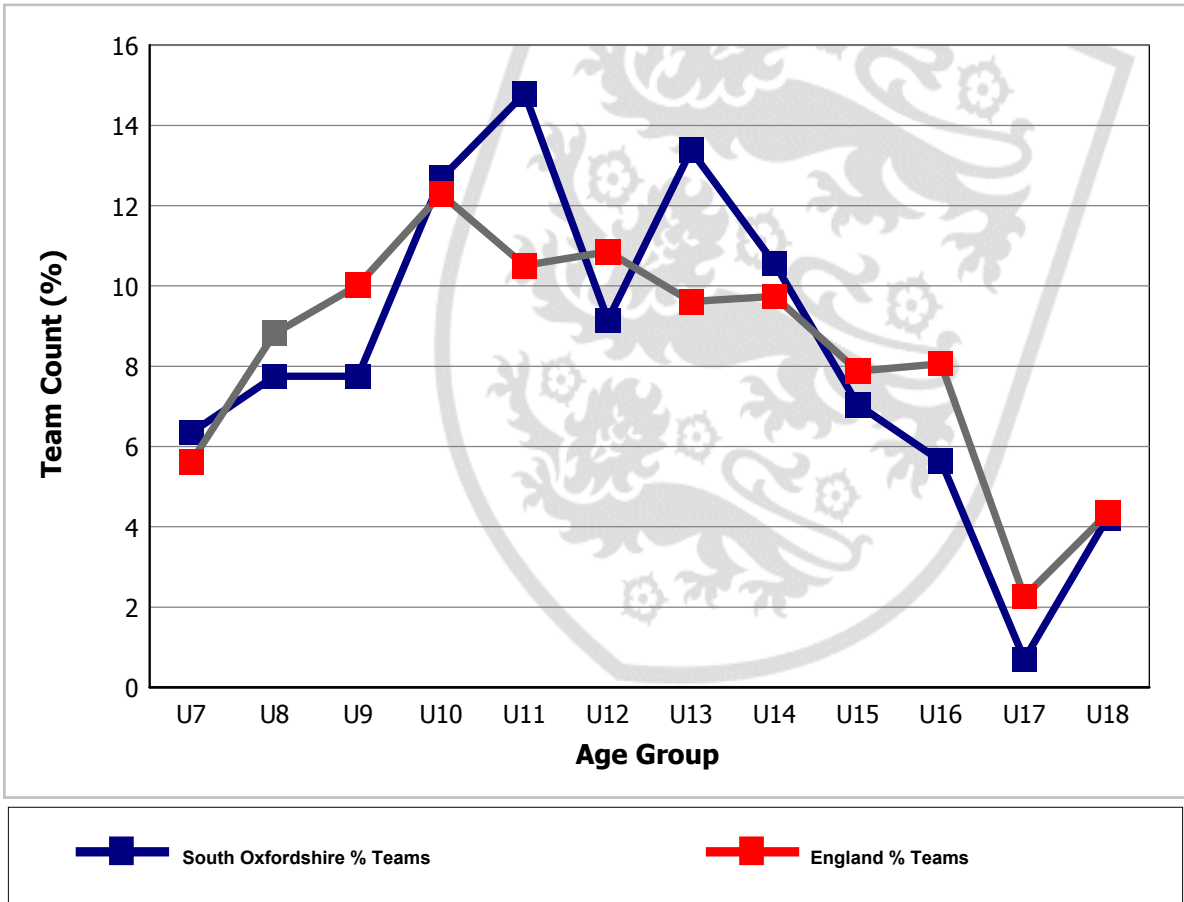
Table 4: Number of teams at each age group

Age Group	Total No. of Teams	No. of Mixed Teams	No. of Male Teams	No. of Female Teams
U7	9	9	0	0
U8	11	11	0	0
U9	11	11	0	0
U10	18	18	0	0
U11	21	0	19	2
U12	13	0	12	1
U13	19	0	18	1
U14	15	0	10	5
U15	10	0	10	0
U16	8	0	7	1
U17	1	0	1	0
U18	6	0	6	0
Open Aged	82	0	80	2
Veterans	3	0	3	0
<b>Totals</b>	<b>227</b>	<b>49</b>	<b>166</b>	<b>12</b>

# South Oxfordshire

The following figure plots the change in the percentage of youth teams across age groups in South Oxfordshire and highlights a peak number of teams in the U11 age group. Where there is no line on the graph for 'Teams within LA %', there are no youth teams playing in the Local Authority. The national percentages for each age group are also included for comparison.

Figure 4: Individual youth teams as a proportion of all U18 teams in South Oxfordshire



# South Oxfordshire

## LEAGUES

### Leagues with South Oxfordshire Teams

There are 27 leagues containing teams from South Oxfordshire (see table 5).

- In total 17 of these leagues are adult leagues.
- There are 11 teams in South Oxfordshire that have not been assigned to a league. Where teams have not been assigned to a league, this data could potentially be highlighting teams playing in 'friendlies' only or it could be highlighting data missing from CAS.

Table 5 summarises the main coverage of football in South Oxfordshire, in respect of the age ranges of teams, numbers of teams and leagues in which they participate.

Table 5: League structures in South Oxfordshire

League	Age Group	No. of Teams in League	No. of South Oxfordshire Teams in League	% of Teams in League Playing in South Oxfordshire	Charter Standard and Respect
Allied Counties Youth Football League	U18	40	1	2.5	
Aylesbury & District League	Open Aged	54	4	7.4	Respect
Aylesbury Sunday Combination	Open Aged	28	1	3.6	Respect
Banbury District & Lord Jersey F A	Open Aged	51	1	2.0	Respect
Berkshire Youth Development League	U7	19	2	10.5	Respect
Berkshire Youth Development League	U8	25	1	4.0	Respect
Berkshire Youth Development League	U9	36	2	5.6	Respect
Berkshire Youth Development League	U10	38	3	7.9	Respect
Berkshire Youth Development League	U11	36	3	8.3	Respect
Berkshire Youth Development League	U13	30	1	3.3	Respect
Berkshire Youth Development League	U14	22	1	4.5	Respect
Chiltern Church League	Open Aged	14	1	7.1	
East Berkshire Youth Football League	U9	48	2	4.2	Respect
East Berkshire Youth Football League	U10	61	3	4.9	Respect
East Berkshire Youth Football League	U11	53	3	5.7	Respect
East Berkshire Youth Football League	U12	66	2	3.0	Respect
East Berkshire Youth Football League	U13	61	1	1.6	Respect
East Berkshire Youth Football League	U14	38	3	7.9	Respect
East Berkshire Youth Football League	U15	35	2	5.7	Respect
East Berkshire Youth Football League	U16	31	1	3.2	Respect

# South Oxfordshire

League	Age Group	No. of Teams in League	No. of South Oxfordshire Teams in League	% of Teams in League Playing in South Oxfordshire	Charter Standard and Respect
Hellenic Football League	Open Aged	91	8	8.8	Respect
Hellenic Football League	Veterans	14	2	14.3	Respect
High Wycombe Sunday Combination	Open Aged	53	4	7.5	
North Berks League	Open Aged	59	13	22.0	Respect
Oxford Boys' League	U7	9	2	22.2	Respect
Oxford Boys' League	U8	31	7	22.6	Respect
Oxford Boys' League	U9	29	4	13.8	Respect
Oxford Boys' League	U10	35	8	22.9	Respect
Oxford Boys' League	U11	41	10	24.4	Respect
Oxford Boys' League	U12	36	7	19.4	Respect
Oxford Boys' League	U13	30	10	33.3	Respect
Oxford Boys' League	U14	30	4	13.3	Respect
Oxford Boys' League	U15	23	4	17.4	Respect
Oxford City F.A.	Open Aged	15	2	13.3	Respect
Oxford Mail Girls Football League	U9	1	1	100.0	CSL, Respect
Oxford Mail Girls Football League	U10	7	2	28.6	CSL, Respect
Oxford Mail Girls Football League	U11	8	2	25.0	CSL, Respect
Oxford Mail Girls Football League	U12	13	1	7.7	CSL, Respect
Oxford Mail Girls Football League	U13	9	1	11.1	CSL, Respect
Oxford Mail Girls Football League	U14	15	4	26.7	CSL, Respect
Oxford Mail Girls Football League	U16	7	1	14.3	CSL, Respect
Oxfordshire Invitation Youth League	U16	31	3	9.7	CSL, Respect
Oxfordshire Invitation Youth League	U18	22	3	13.6	CSL, Respect
Oxfordshire Senior Football League	Open Aged	46	4	8.7	Respect
Reading & District Sunday League	Open Aged	121	12	9.9	
Reading Football League	Open Aged	69	8	11.6	Respect
South Bucks Mini Soccer Conference	U7	21	2	9.5	Respect
South Bucks Mini Soccer Conference	U8	31	2	6.5	Respect
South Bucks Mini Soccer Conference	U9	35	2	5.7	Respect
South Bucks Mini Soccer Conference	U10	39	2	5.1	Respect
South Bucks Mini Soccer Conference	U11	9	1	11.1	Respect

# South Oxfordshire

League	Age Group	No. of Teams in League	No. of South Oxfordshire Teams in League	% of Teams in League Playing in South Oxfordshire	Charter Standard and Respect
South Bucks Youth League	U18	31	2	6.5	Respect
South Chiltern Minor League	U13	12	2	16.7	CSL, Respect
South Chiltern Minor League	U17	20	1	5.0	CSL, Respect
Southern Region Women's Football League	Open Aged	22	1	4.5	
Thames Valley Counties Womens League	Open Aged	39	1	2.6	Respect
Upper Thames Valley Football League	Open Aged	1	1	100.0	
Upper Thames Valley League (Autotype)	Open Aged	48	14	29.2	Respect
Witney And Dist. F.A.	Open Aged	59	1	1.7	Respect
Wycombe & District Football League	Open Aged	31	2	6.5	Respect
Wycombe & South Bucks Minor League	U11	30	2	6.7	Respect
Wycombe & South Bucks Minor League	U12	38	3	7.9	Respect
Wycombe & South Bucks Minor League	U13	44	4	9.1	Respect
Wycombe & South Bucks Minor League	U14	39	2	5.1	Respect
Wycombe & South Bucks Minor League	U15	47	3	6.4	Respect
Wycombe & South Bucks Minor League	U16	40	3	7.5	Respect
<b>Count of Leagues: 27</b>					

**Please Note:**

- 1). Count of teams may differ from the front page, since some teams may not have a league allocated.
- 2). CSL - indicates Charter Standard League.
- 3). If a league appears more than once for an agegroup, it may be that teams have been applied to different/duplicated league entities.

## SUMMARY

This report has identified the status of football in South Oxfordshire for 10/11 season. The report is part of an ongoing process that will allow the data to be updated and used in the development of football locally.

In closing The Football Association would like to thank you for any feedback that you may have on this report. Please convey any errors or omissions to either your local County FA or [Data@TheFA.com](mailto:Data@TheFA.com).

# South Oxfordshire

## APPENDIX 1

Table 6 - Summary of football clubs in South Oxfordshire

DE - Club existed in previous season, but not in the current season.

SS - Refers to Clubs with only Small Sided teams

Club Name	Status	10/11 Teams					Charter Standard 10/11
		Adult	Youth All Formats	Mini	* Foreign Team Count	Total This LA	
AFC Brightwell Youth		0	2	2	0	4	
AFC Crowmarsh		2	0	0	0	2	
AFC Henley		0	10	5	0	15	Comm.
AFC HENLEY GIRLS	DE	0	0	0	0	0	
AFC Peppard	DE	0	0	0	0	0	
AFC Wallingford		1	1	0	0	2	
AFC Whitchurch		0	1	3	0	4	
AFC WHITCHURCH GIRLS	DE	0	0	0	0	0	
Appleton Youth	DE	0	0	0	0	0	
Benson		2	0	0	0	2	
Benson Lions		2	0	0	0	2	
Benson United Boys		0	2	2	0	4	
Benson United Girls		0	1	0	0	1	
Berinsfield		1	0	0	0	1	
Berinsfield Boys'		0	2	1	0	3	
BERINSFIELD LADIES	DE	0	0	0	0	0	
BERINSFIELD REBELS		1	0	0	0	1	
Bishopswood Sports		1	0	0	0	1	
Bowyer Arms		1	0	0	0	1	
Chalgrove		1	0	0	0	1	
Chalgrove Cavaliers		0	3	2	0	5	Devel.
CHALGROVE CAVALIERS GIRLS		0	1	0	0	1	Devel.
CHARLTON & DISTRICT	DE	0	0	0	0	0	Charter
Charlton F.C.	DE	0	0	0	0	0	
Chatsworth Buccaneers		1	0	0	0	1	
Chearsley Cricketers AFC		1	0	0	0	1	
Checkendon		2	0	0	0	2	

# South Oxfordshire

Club Name	Status	10/11 Teams					Charter Standard 10/11
		Adult	Youth All Formats	Mini	Foreign * Team Count	Total This LA	
Chinnor		5	0	0	0	5	Comm.
Chinnor Athletic		1	0	0	0	1	
Chinnor Colts		0	1	0	0	1	
Chinnor Exiles		2	0	0	0	2	
Chinnor Ladies & Girls		1	5	1	0	7	Comm.
Chinnor Sports		1	0	0	0	1	
Chinnor Youth		0	7	4	0	11	Comm.
Cross Keys (Wallingford)		1	0	0	0	1	
Crowmarsh Gifford		1	0	0	0	1	
Crowmarsh Youth		0	6	5	0	11	Devel.
Crowmarsh Youth Girls		0	1	1	0	2	Devel.
Dorchester United		1	0	0	0	1	
Finmere		1	0	0	0	1	
Garsington		2	0	0	0	2	
Garsington Youth		0	2	4	0	6	
Goring Robins		0	7	4	0	11	
Goring United		4	0	0	0	4	
GORING UNITED GOOD OLD BOYS		1	0	0	0	1	
Great Milton		2	0	0	0	2	
Harwell (Village)		2	0	0	0	2	
Harwell and Hendred Youth	DE	0	0	0	0	0	Charter
Henley Town		3	1	0	0	4	Comm.
Henley Town Ladies		1	0	0	0	1	Comm.
Henley YMCA		3	0	0	0	3	
Holton Athletic	DE	0	0	0	0	0	
Jackass Inn Hagbourne		1	0	0	0	1	
Jet		1	0	0	0	1	
Kennington Athletic		0	5	3	0	8	Charter
Kennington United		3	0	0	0	3	
Kidmore End		2	0	0	0	2	
King and Queen Wheatley		1	0	0	0	1	

# South Oxfordshire

Club Name	Status	10/11 Teams					Charter Standard 10/11
		Adult	Youth All Formats	Mini	Foreign * Team Count	Total This LA	
KINGS ARMS WHEATLEY		1	0	0	0	1	
Long Wittenham Athletic		3	0	0	0	3	
Marcham		2	0	0	0	2	
Milton Midgets		1	0	0	0	1	
Milton United		3	5	0	0	8	Devel.
Newtown (Henley)		2	0	0	0	2	
Old Salesians		1	0	0	0	1	
Oxfordshire Fire & Rescue		1	0	0	0	1	
Park United		2	0	0	0	2	
Rotherfield United		0	7	5	0	12	Devel.
Saxton Pirates		1	0	0	0	1	
SHEPHERDS HUT (EWELME)		1	0	0	0	1	
Shiplake		0	3	0	0	3	
Southrop		1	0	0	0	1	
Tetsworth		1	0	0	0	1	
THAME ATHLETIC	DE	0	0	0	0	0	
Thame Boys		0	6	4	0	10	Comm.
Thame Town		2	0	0	0	2	
Thame United		2	0	0	0	2	Comm.
Thame United Churches		1	0	0	0	1	
Thame United Social	DE	0	0	0	0	0	
Thame Youth		0	6	0	0	6	
Wallingford Wanderers		1	0	0	0	1	
Watlington Town		1	2	0	0	3	
Wheatley Boys'		0	1	1	0	2	
Whitchurch Hill		0	3	1	0	4	
WOODCOTE AND STOKE ROW GIRLS		0	1	0	0	1	
Woodcote/Stoke Row		2	1	1	0	4	Charter
<b>Totals</b>		<b>85</b>	<b>93</b>	<b>49</b>	<b>0</b>	<b>227</b>	

# South Oxfordshire

---

- \* Foreign Team Count - these are the teams affiliated to South Oxfordshire clubs, but playing in neighbouring Local Authorities. These teams are **not** added to the team total for this authority.

## APPENDIX 2

This section provides a brief overview of South Oxfordshire's population structure and characteristics.

### Demographic Profile

According to the mid-2009 population estimate data from the Office for National Statistics, South Oxfordshire has a population of 130,572. 66,210 of South Oxfordshire's population, 50.7%, are female compared to a national average of 50.8%.

For statistical purposes we define the number of people in a district who could potentially play football as the "relevant population". For Adult teams, the relevant population is males and females aged between 16 and 44 years, for Youth teams (all formats), the relevant population is males and females aged between 10 and 18 years, and for Mini Soccer, the relevant population is males and females aged 6 to 9 years. Table 6 outlines the numbers and percentages of the population in South Oxfordshire for the population age groups relevant to football.

Table 6: South Oxfordshire relevant population age groups

Population Group	South Oxfordshire Relevant Population		% of South Oxfordshire Relevant Population		England Relevant Population	
	Male	Female	Male	Female	Male	Female
Adult - Aged 16 to 44 Years	23,388	22,945	35.5%	34.9%	36.6%	36.0%
Youth - Aged 10 to 18 Years	7,066	6,095	10.7%	9.3%	9.8%	9.3%
Mini Soccer - Aged 6 to 9 Years	6,332		9.6%		8.5%	

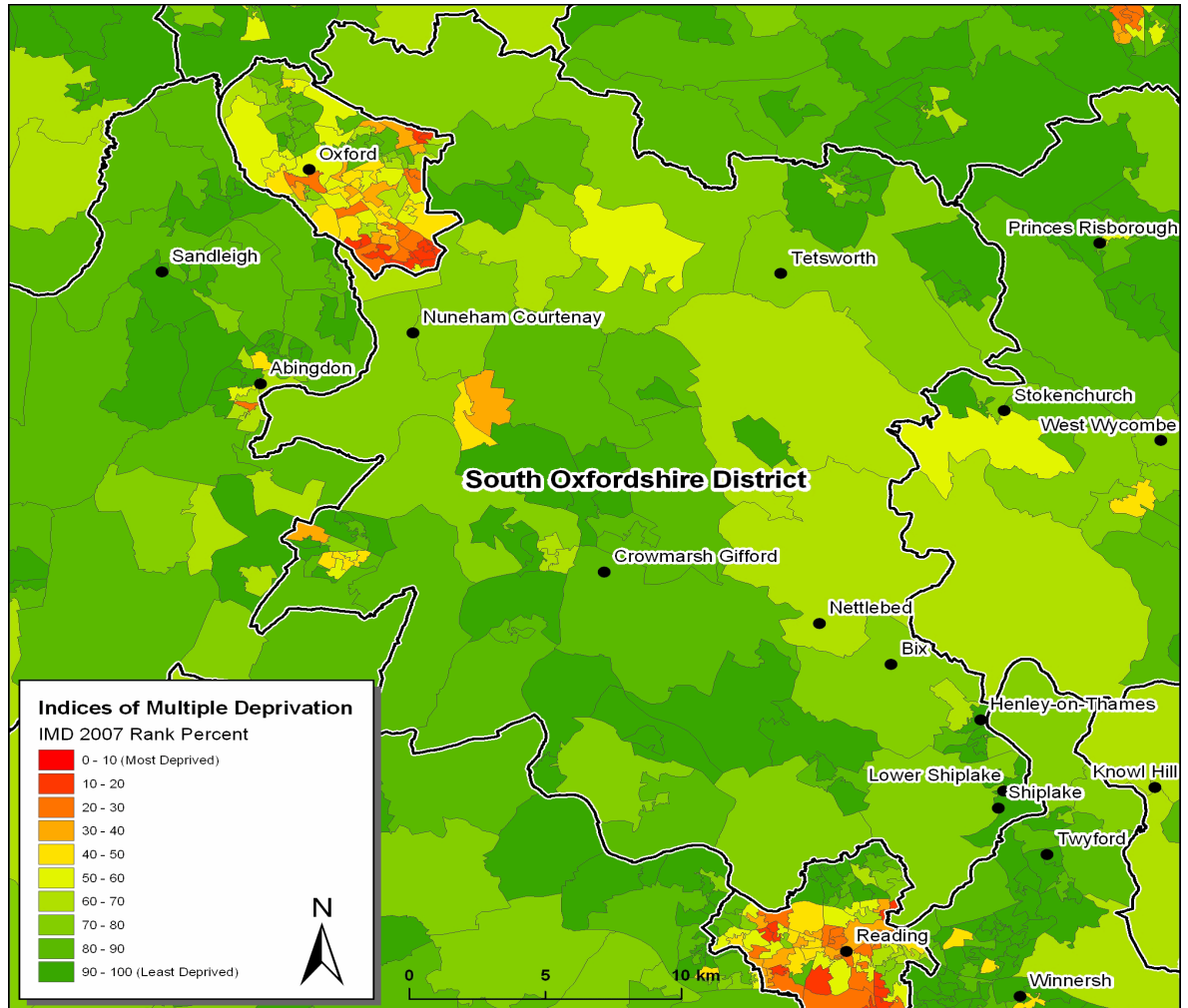
In South Oxfordshire 5.4% of the population come from Ethnic Minority (EM) groups, which is lower than that of England as a whole at 8.8%. The largest EM group in the authority is Indian at 1.1%, followed by African at 0.6%; the corresponding national averages are 1.9% and 1.0% respectively. (Source: 2001 Census)

# South Oxfordshire

## Index of Multiple Deprivation (IMD)

The Index of Multiple Deprivation (2007) provides a nationally accepted means by which to identify the levels of deprivation in England.

Figure 5: South Oxfordshire IMD ranking indicating main settlements



## Active People Survey Data

The Active People Survey (APS), commissioned by Sport England, is the largest sports survey undertaken in Europe. The survey provides detail on the level of participation in sport and physical activity by adults (16+) for each Local Authority in England. This data is based on a minimum sample size of 500 interviews in each area.

The data from APS 4 (October 2009 - October 2010) provides:

- 1) Percentage of the adult population participating in football for at least 30 minutes at least once a month.
- 2) Percentage of the adult population participating in football for at least 30 minutes at least once a week.

The results for South Oxfordshire are shown below (where blank this indicates that data is unavailable due to small sample size):

	APS 4 - Football	
	1 x month	1 x week
South Oxfordshire	6.6%	4.7%
National Average	7.33%	4.96%

This football specific data can be compared against general participation across all sports in the Local Authority area by accessing the following link to Local Sport Profile data [http://www.sportengland.org/research/local\\_sport\\_profiles.aspx](http://www.sportengland.org/research/local_sport_profiles.aspx)

Please refer to the Football Participation Reports User Guide 2010/11 for more detail on the interpretation of this data. The guide can be found at: [https://www.fadml.com/C13/Football\\_Development/default.aspx](https://www.fadml.com/C13/Football_Development/default.aspx) and will be available from 1st March 2011.

## National Statistics 2001 Area Classification for Local Authorities

Additional information can be found on the Area Classification clusters that were used to group Local Authorities using the website below:

[http://www.statistics.gov.uk/about/methodology\\_by\\_theme/area\\_classification/la/default.asp](http://www.statistics.gov.uk/about/methodology_by_theme/area_classification/la/default.asp)

