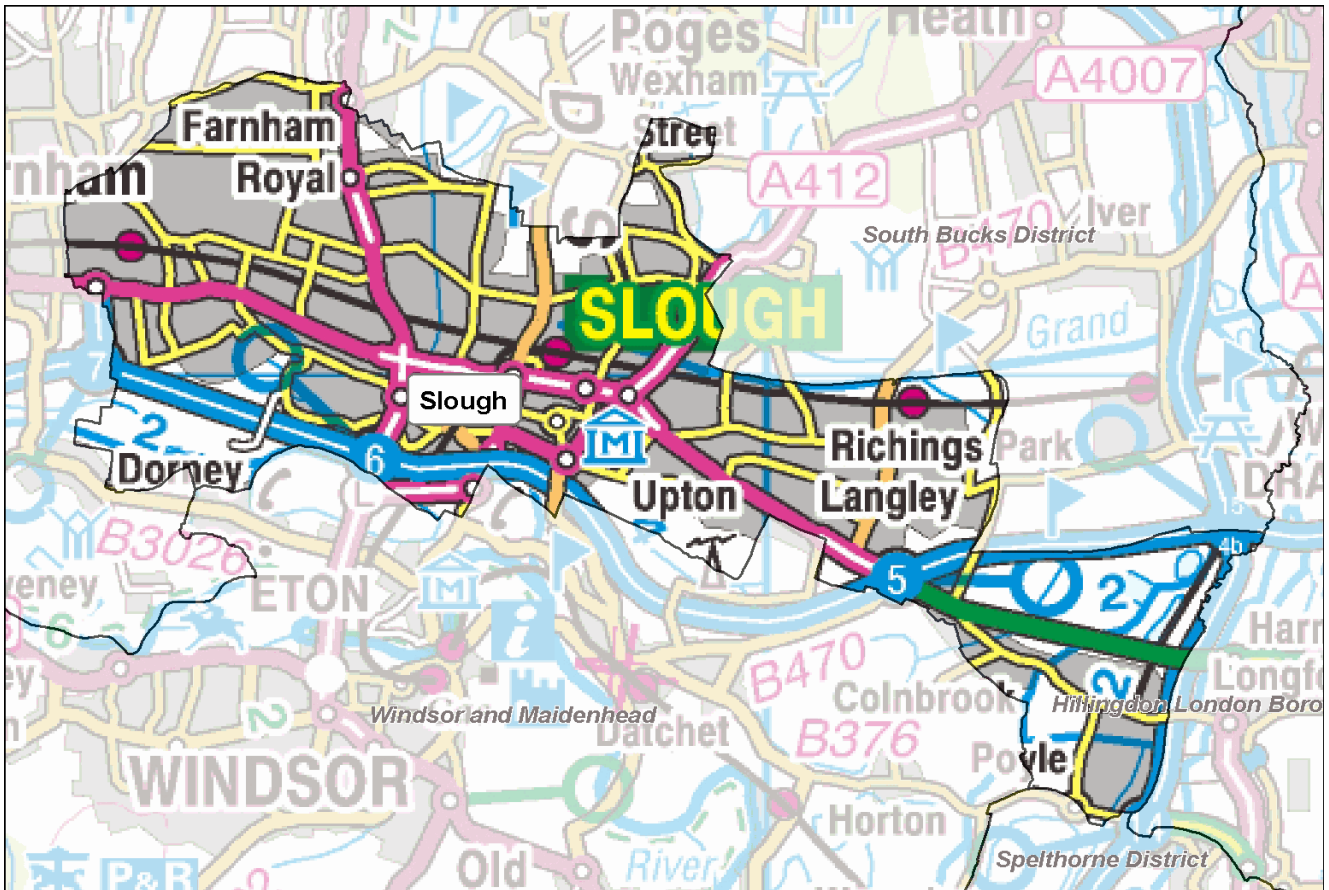


Football Participation Report:

Slough

Season 10/11



INTRODUCTION

Football has the highest participation of any team sport in the country - there are over 129,000 affiliated football teams in England, (10/11). The National Game Strategy is The FA's plan for grassroots football between 2008 and 2012 and within this, there is an ambition to grow the game by a further 20,500 teams by 2012.

Over the past 8 years, The FA has invested in significant improvements to the affiliation process which has led to the development of the County Administration System (CAS). CAS allows us to chart participation within each local authority area and this report reflects the latest participation data in your particular area. These reports are freely available and it is hoped that they will be used by local authorities, developers, clubs, leagues and other interested parties to advise current and proposed activities and investments around the game at the local level.

The FA will welcome support and advice from local partners who are similarly interested in sustaining and developing the game. Since the production of the Season 09/10 Local Area Data Reports, significant effort has been put into improving data from the County Administration System (CAS). **In some instances, this has resulted in changes to the 10/11 totals compared to how they appeared in the last version of the report.**

Whilst the data provided is robust it is not claimed to be 100% accurate. There are a number of reasons why some errors will exist and it is critical that errors are reported back to The FA and/or CFAs so we can continually improve the quality of the information available. Please report any errors or omissions to either your local County FA or Data@TheFA.com.

Each year, the County Football Associations and The Football Association will work hard to improve methods for capturing data. As a result, in some circumstances, there may appear to be shifts in participation which are directly due to refined/improved data entry rather than actual growth or decline. Please ensure that in assessing trends, you take advice from your respective County FA.

Changes in this version:

1. Population Figures updated to Mid 2009 estimates.
2. Active people data updated and taken from APS4.
3. Introduction of Youth - All Formats Category which includes:
 - a) U11 to U18 football of Male, Female and Mixed genders (mixed is included into male category for the purposes of this report).
 - b) 3v3, 4v4, 5v5, 6v6, 7v7, 9v9 and 11v11 team categories.
4. Further refinement of specific playing locations of teams (this will have resulted in some teams being reallocated into new Local Authority areas).
5. Improved validation of small sided teams (including affiliated and currently non affiliated teams).

This year a User Guide has also been produced in order to provide additional support in analysing the data, and it is recommended that this document is referred to alongside this report. The guide can be found at: https://www.fadml.com/C13/Football_Development/default.aspx and will be available from 1st March 2011.

FOOTBALL KEY FACTS - Slough

Demographics

- Slough has a population of **128,387** (Mid year estimate, Office for National Statistics, 2009) and is expected to grow to **139,300** by 2018 (Office for National Statistics, 2008).
- **38.7%** of the population in Slough come from Ethnic Minority communities compared to a national figure of **8.78%** (Census, 2001).
- **7.2%** of the adult population (16+) participate in football for at least 30 minutes once per week, as compared to a national average of **4.96%** (Sport England Active People Survey, 2010).

Clubs and Teams

- Slough has a total of **109** affiliated clubs with a total of **234** teams of which **232** play in Slough. There are also **107** small sided teams in Slough making a total of **339** teams.
- Of the **339** teams operating in Slough, **109 (32.2%)** are adult teams, **85 (25.1%)** are youth teams (all formats), **38 (11.2%)** are Mini-Soccer teams and **107 (31.6%)** are small sided.
- **55.3%** or **68** of the **123** Youth and Mini-soccer teams play in a club that has achieved a Charter Standard Award as compared to a national average of **70.4%**.
- The number of teams **has decreased by 2 teams** overall in Slough from season 09/10 to season 10/11.

This comprises:

- an increase of 2 adult teams.
- a decrease of 1 youth teams (all formats).
- a decrease of 6 Mini-Soccer teams.
- an increase of 3 small sided teams.

Slough

Conversion Rates

The following table and graphs show football conversion rates in the authority compared to Regional and National rates. These are calculated by comparing the number of persons playing football to the relevant population age group.

We estimate the number of individuals playing football by multiplying the number of teams by the average number of players involved in the different forms of football. We assume the following:

- 18 players are involved in an 11-a-side squad
- 10 players in a Mini-Soccer team squad
- 12 players in a 9 v 9 small-sided team squad
- 9 players in a 7 v 7 small-sided team squad
- 8 players in 6 v 6 and 5 v 5 small-sided team squads
- 6 players in a 4 v 4 small-sided team squad

These numbers are then expressed as a proportion of the relevant population. This creates a percentage of the population at each age group involved in playing football, called a 'conversion rate'. We can then compare these conversion rates to Regional and National averages.

Ages 5 to 44, male and female, of the local area population have been used to calculate the conversion rates on this page.

Table 1: Teams, players and conversion rates for Slough, South East and England

	Adult 11-a-side		Youth All Formats		Mini- Soccer	Adult Small Sided	All Forms
	Male	Female	Male	Female	Mixed	Male	Total
Slough							
No of Teams 10/11	107	2	82	3	38	107	339
No of Teams 09/10	104	3	83	3	44	98	341
Variance	2.9%	-33.3%	-1.2%	0.0%	-13.6%	9.2%	-0.6%
Players 10/11	1,926	36	1,434	48	380	856	4680
Players 09/10	1,560	45	1,245	45	440	784	4119
Conversion Rate 10/11	6.3%	0.1%	23.7%	0.8%	6.3%	2.8%	6.0%
Conversion Rate 09/10	5.7%	0.2%	23.3%	1.0%	6.5%	2.9%	5.7%
Variance	0.6%	0.0%	0.4%	-0.1%	-0.2%	0.0%	0.3%
South East							
Conversion Rates 10/11	5.5%	0.2%	23.5%	2.3%	9.6%	1.7%	6.0%
Conversion Rates 09/10	4.8%	0.2%	26.6%	2.0%	9.1%	2.2%	5.8%
Variance	0.7%	0.0%	-3.1%	0.3%	0.5%	-0.4%	0.2%
England							
Conversion Rate 10/11	5.4%	0.3%	21.4%	2.3%	9.1%	1.8%	5.9%
Conversion Rate 09/10	4.8%	0.2%	23.3%	2.0%	8.0%	1.9%	5.4%
Variance	0.6%	0.0%	-1.9%	0.3%	1.1%	-0.1%	0.5%

Notes: All conversion rate figures in this table are subject to rounding, so whilst the seasonal figures in the table may not imply a change, the variance may indicate a drop or increase as the 4th January data cut figures may differ.

Slough

Figure 1: Conversion rates by type of football for Slough 10/11 as set against regional and national averages.

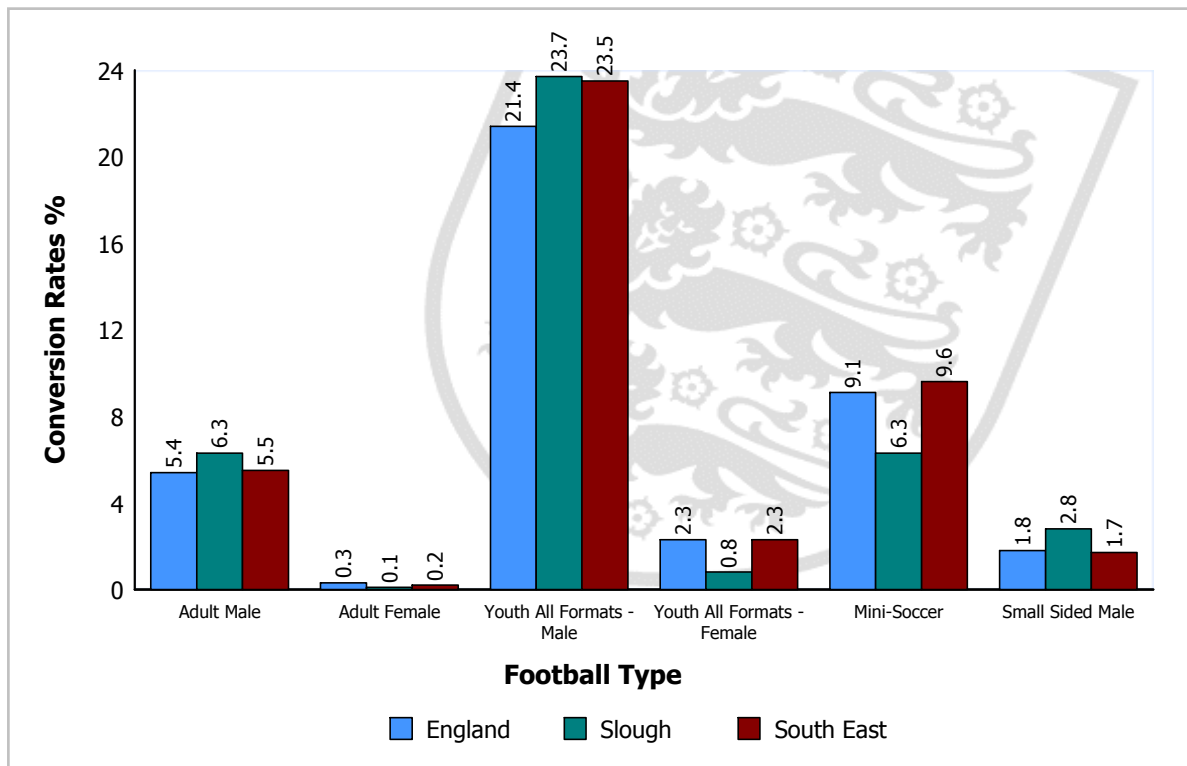
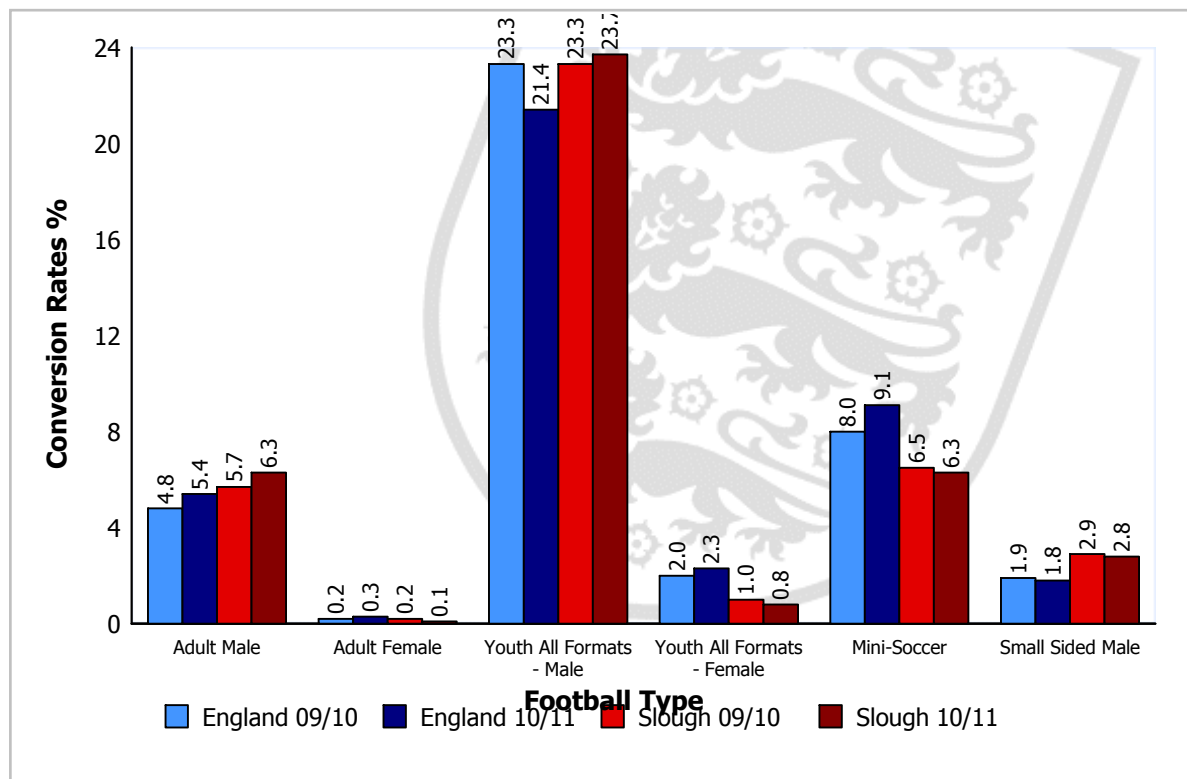


Figure 2: Conversion rate trends for different football types for Slough 09/10 and 10/11 as set against national averages.



Please Note: Season 09/10 figures for Youth - All Formats reflect Youth 11 v 11 only.

Local Authority Comparison of Conversion Rates

A comparison of conversion rates of Local Authorities can be made between those similar in nature by utilising the National Statistics 2009 Area Classification of Local Authorities (provided by the Office for National Statistics). The classification groups Local Authorities based on population characteristics.

Table 2 below shows the conversion rates for Slough compared to those most similar to it, that is, members of the same subgroup:

Barnet, Ealing, Harrow, Hounslow, Luton, Merton, Redbridge

Table 2: Comparison of Local Authorities in the same subgroup as Slough.

Football Type		Conversion Target ¹	Slough Conversion Rate	Variance	Growth Potential ²
Adult 11-a-side	Male	5.2	6.3	1.1	0
	Female	0.2	0.1	0.0	2
Youth ² (all formats)	Male	18.6	23.7	5.1	0
	Female	1.8	0.8	-1.0	7
Mini-Soccer	Mixed	6.4	6.3	-0.1	2
Adult Small Sided	Male	2.8	2.8	0.0	2

¹ The target is the value of the upper quartile (75th Percentile) of conversion rates of all local authorities in the same subgroup. The conversion target is calculated for each type of football.

² Growth Potential represents the number of teams for each football type that the local authority would need to develop to reach the conversion target value. For Youth (all formats) the growth potential has been calculated on an average number of players across all formats.

Local Authorities are encouraged to discuss growth potential targets with their County Development Manager to determine a realistic programme of intervention, supported by The FA, capable of increasing participation over an agreed period.

Where the Local Authority has participation rates already above the targets consideration should be given as to how these rates can be sustained long term.

CLUBS

Slough Clubs

- In Slough the club to team ratio is 1:2.1 (i.e. each club runs on average 2.1 teams). This compares to a national ratio of 1:2.9 and a regional ratio of 1:3.3.
- 29 of the youth clubs in Slough run youth 11-a-side teams only and do not have a mini-soccer team.
- There are 4 clubs fielding both youth and adult teams.
- 77.1% of clubs in Slough have adult teams, compared to national and regional averages of 72.5% and 73.7% respectively.
- 78.6% of adult-only clubs in Slough have only one team compared to the national average of 76.0%.

Appendix 1 shows Slough based clubs with numbers of associated teams for each form of football during season 10/11. Finally, it shows the status of clubs that have been awarded The FA Charter Standard award and the level of that award.

Charter Standard

Of the 109 clubs in Slough, 10 have achieved Charter Standard. The level of status obtained by these clubs is outlined in Table 3.

Table 3: Clubs with Charter Standard in Slough

Status	Slough		England	
	Number	Percentage	Number	Percentage
Community Club	1	0.9%	515	1.7%
Development Club	0	0.0%	521	1.8%
Charter Standard	9	8.3%	4379	14.7%
Total	10	9.2%	5415	18.2%

In terms of teams, 55.3% of youth and mini-soccer teams play within a club of Charter Standard status. This compares to a national average of 70.4% with a National Game Strategy target of 75% of youth and mini-soccer teams playing within a Charter Standard Club by 2012.

TEAMS

Slough Teams

- There are a total of 232 teams playing competitive football in Slough excluding small-sided teams.
- According to the CAS data, there are 5 female teams playing in Slough. This is 2.2% of the total number of teams.
- The peak youth age is U12, with 16 teams playing at this level.

Table 4 shows the number of Slough based teams for each form of football.

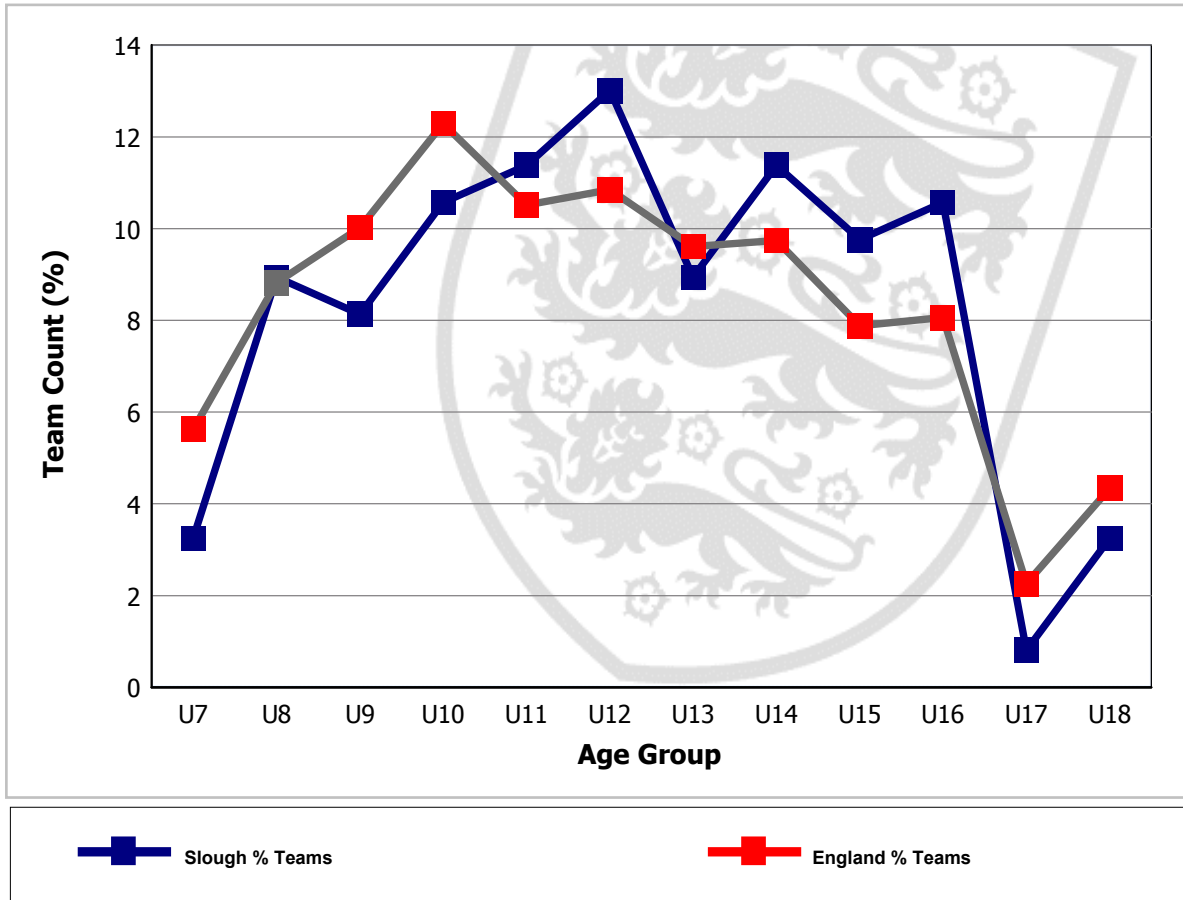
Table 4: Number of teams at each age group

Age Group	Total No. of Teams	No. of Mixed Teams	No. of Male Teams	No. of Female Teams
U7	4	4	0	0
U8	11	11	0	0
U9	10	10	0	0
U10	13	13	0	0
U11	14	0	14	0
U12	16	0	15	1
U13	11	0	11	0
U14	14	0	14	0
U15	12	0	11	1
U16	13	0	13	0
U17	1	0	0	1
U18	4	0	4	0
Open Aged	105	0	103	2
Veterans	4	0	4	0
Totals	232	38	189	5

Slough

The following figure plots the change in the percentage of youth teams across age groups in Slough and highlights a peak number of teams in the U12 age group. Where there is no line on the graph for 'Teams within LA %', there are no youth teams playing in the Local Authority. The national percentages for each age group are also included for comparison.

Figure 4: Individual youth teams as a proportion of all U18 teams in Slough



Slough

LEAGUES

Leagues with Slough Teams

There are 29 leagues containing teams from Slough (see table 5).

- In total 18 of these leagues are adult leagues.
- There are 10 teams in Slough that have not been assigned to a league. Where teams have not been assigned to a league, this data could potentially be highlighting teams playing in 'friendlies' only or it could be highlighting data missing from CAS.

Table 5 summarises the main coverage of football in Slough, in respect of the age ranges of teams, numbers of teams and leagues in which they participate.

Table 5: League structures in Slough

League	Age Group	No. of Teams in League	No. of Slough Teams in League	% of Teams in League Playing in Slough	Charter Standard and Respect
Allied Counties Youth Football League	U18	40	1	2.5	
Amateur Football Combination	Open Aged	346	4	1.2	Respect
BOBI	Open Aged	26	1	3.8	CSL, Respect
Bucks Girls League	U15	11	1	9.1	CSL, Respect
Capital Football League	Open Aged	27	1	3.7	
Chiltern Church Junior League	U8	4	1	25.0	Respect
Chiltern Church Junior League	U10	10	1	10.0	Respect
Chiltern Church Junior League	U12	8	1	12.5	Respect
Chiltern Church Junior League	U14	4	1	25.0	Respect
Chiltern Church Junior League	U16	6	1	16.7	Respect
Chiltern Church League	Open Aged	14	3	21.4	
Chiltern Church League	Veterans	1	1	100.0	
East Berks Football League	Open Aged	67	36	53.7	
East Berkshire Youth Football League	U13	61	1	1.6	Respect
East Berkshire Youth Football League	U15	35	2	5.7	Respect
East Berkshire Youth Football League	U16	31	1	3.2	Respect
English Colleges Football League	U18	19	1	5.3	
Hayes & District Sunday Football League	Open Aged	57	1	1.8	
High Wycombe Sunday Combination	Open Aged	53	1	1.9	
London Old Boys' Cup	Veterans	3	2	66.7	

Slough

League	Age Group	No. of Teams in League	No. of Slough Teams in League	% of Teams in League Playing in Slough	Charter Standard and Respect
Maidenhead Norfolkians Cup Competition	Open Aged	2	1	50.0	
Middlesex County Football League	Veterans	1	1	100.0	Respect
Observer Industrial League	Open Aged	22	20	90.9	
Reading Football League	Open Aged	69	3	4.3	Respect
Slough And Windsor Open Challenge Trophy	U16	2	2	100.0	
Slough Mini Soccer Friendly Scheme	U7	9	3	33.3	Respect
Slough Mini Soccer Friendly Scheme	U8	14	8	57.1	Respect
Slough Mini Soccer Friendly Scheme	U9	20	8	40.0	Respect
Slough Mini Soccer Friendly Scheme	U10	13	9	69.2	Respect
Slough Mini Soccer Friendly Scheme	U11	5	4	80.0	Respect
Slough Mini Soccer Friendly Scheme	U12	2	1	50.0	Respect
Slough Mini Soccer Friendly Scheme	U13	1	1	100.0	Respect
Slough Mini Soccer Friendly Scheme	U14	1	1	100.0	Respect
Slough Soccer Combination	U9	1	1	100.0	Respect
Slough Soccer Combination	U11	18	6	33.3	Respect
Slough Soccer Combination	U12	17	9	52.9	Respect
Slough Soccer Combination	U13	10	6	60.0	Respect
Slough Soccer Combination	U14	17	8	47.1	Respect
Slough Soccer Combination	U16	6	4	66.7	Respect
Slough Soccer Combination	Open Aged	1	1	100.0	Respect
Slough Town Challenge Cup Competition	Open Aged	1	1	100.0	
South Bucks Mini Soccer Conference	U8	31	1	3.2	Respect
South Bucks Mini Soccer Conference	U9	35	1	2.9	Respect
South Bucks Mini Soccer Conference	U10	39	1	2.6	Respect
South Bucks Youth League	U18	31	2	6.5	Respect
South Chiltern Minor League	U12	9	1	11.1	CSL, Respect
South Chiltern Minor League	U15	30	1	3.3	CSL, Respect
South Chiltern Minor League	U17	20	1	5.0	CSL, Respect
Southern League	Open Aged	65	1	1.5	Respect
Southern Region Women's Football League	Open Aged	22	1	4.5	
Thames Valley Counties Womens League	Open Aged	39	1	2.6	Respect

Slough

League	Age Group	No. of Teams in League	No. of Slough Teams in League	% of Teams in League Playing in Slough	Charter Standard and Respect
Thames Valley Sunday League	Open Aged	55	29	52.7	Respect
Wycombe & South Bucks Minor League	U11	30	3	10.0	Respect
Wycombe & South Bucks Minor League	U12	38	2	5.3	Respect
Wycombe & South Bucks Minor League	U13	44	3	6.8	Respect
Wycombe & South Bucks Minor League	U14	39	3	7.7	Respect
Wycombe & South Bucks Minor League	U15	47	7	14.9	Respect
Wycombe & South Bucks Minor League	U16	40	5	12.5	Respect
Count of Leagues: 29					

Please Note:

- 1). Count of teams may differ from the front page, since some teams may not have a league allocated.
- 2). CSL - indicates Charter Standard League.
- 3). If a league appears more than once for an agegroup, it may be that teams have been applied to different/duplicated league entities.

SUMMARY

This report has identified the status of football in Slough for 10/11 season. The report is part of an ongoing process that will allow the data to be updated and used in the development of football locally.

In closing The Football Association would like to thank you for any feedback that you may have on this report. Please convey any errors or omissions to either your local County FA or Data@TheFA.com.

Slough

APPENDIX 1

Table 6 - Summary of football clubs in Slough

DE - Club existed in previous season, but not in the current season.

SS - Refers to Clubs with only Small Sided teams

Club Name	Status	10/11 Teams					Charter Standard 10/11
		Adult	Youth All Formats	Mini	* Foreign Team Count	Total This LA	
Admiral Cunningham	DE	0	0	0	0	0	
AFC Donsville		2	0	0	0	2	
AFC Lady Haig	DE	0	0	0	0	0	
Airport Motors	DE	0	0	0	0	0	
Alpha Arms Academicals		4	0	0	0	4	
Amersham & Wycombe College	DE	0	0	0	0	0	
Beaconsfield SYCOB Ladies		2	0	0	0	2	Charter
Beaconsfield SYCOB Old Boys		1	0	0	0	1	
Beaconsfield SYCOB Youth		0	9	5	0	14	
Bourne End		0	2	0	1	2	
Bourne End Junior Sports Club	DE	0	0	0	0	0	
Britwell		2	0	0	0	2	
Britwell Boys		0	3	1	0	4	
Britwell United		0	1	0	0	1	
Burnham		2	1	0	0	3	Charter
Burnham Beeches		1	1	0	0	2	
Burnham Junior		0	11	13	0	24	Charter
Burnham Swan		1	0	0	0	1	
Burnham United		1	0	0	0	1	
Burnham Working Mens Club		1	0	0	0	1	
Burnham Youth		0	1	0	0	1	
BX		1	0	0	0	1	
Chalvey (WMC) Sports		2	0	0	0	2	
Chalvey Royals		1	0	0	0	1	
Cippenham Crowns		1	0	0	0	1	
Cippenham RBL		1	0	0	0	1	
Cippenham Sports		1	0	0	0	1	

Slough

Club Name	Status	10/11 Teams					Charter Standard 10/11
		Adult	Youth All Formats	Mini	Foreign * Team Count	Total This LA	
Coln Valley	DE	0	0	0	0	0	
Cowley Explorers	DE	0	0	0	0	0	
Cross Keys (Marlow)		1	0	0	0	1	
Crown Royals		1	0	0	0	1	
Datchet Cricket Club		1	0	0	0	1	
Datchet Village		2	0	0	0	2	
Delaford		1	0	0	1	1	Devel.
Delaford Colts	DE	0	0	0	0	0	Devel.
East Berkshire College		0	1	0	0	1	
Eton Wick		1	1	2	0	4	
Falcons		2	0	0	0	2	
Farnham Royal Youth		0	1	0	0	1	
FC Bentons		1	0	0	0	1	
Foxes	DE	0	0	0	0	0	
Frontline		1	0	0	0	1	
Garibaldi (Chalvey)		1	0	0	0	1	
Gents		1	0	0	0	1	
Gerrards Cross & Fulmer		0	7	3	0	10	Charter
Go on Iver		1	0	0	0	1	
Gold Hill Baptist Church		2	0	0	0	2	
Golden Eagles		0	5	1	0	6	Charter
Harvey Park Wanderers		1	0	0	0	1	
Hedgerley		1	0	0	0	1	
Iver		1	0	0	0	1	
Iver Heath Rovers		1	0	0	0	1	
Iver Heath Village		1	0	0	0	1	
Jolly Londoner		1	0	0	0	1	
King Street Rose		1	0	0	0	1	
Langley Galaxy		0	1	1	0	2	
Langley Hornets		0	6	4	0	10	Charter
Langley Murphs		1	0	0	0	1	

Slough

Club Name	Status	10/11 Teams					Charter Standard 10/11
		Adult	Youth All Formats	Mini	Foreign * Team Count	Total This LA	
Langley United		0	2	0	0	2	
Langley Village		1	0	0	0	1	
Langley Zebras		0	2	0	0	2	
Lent Rise Rangers		0	2	0	0	2	
Long Barn	DE	0	0	0	0	0	
Maidenhead Wanderers		1	0	0	0	1	
Maidenhead Warriors		0	1	1	0	2	Charter
Marlow United	DE	0	0	0	0	0	
Maypole		1	0	0	0	1	
Merrymakers Old Boys		2	0	0	0	2	
Merry's Langley		1	0	0	0	1	
New Hanford		1	0	0	0	1	
Nine Stiles		1	0	0	0	1	
North Maidenhead		1	0	0	0	1	
Old George Inn (Colnbrook)		1	0	0	0	1	
Orchard Park Rangers		2	0	0	0	2	
Partizan		1	0	0	0	1	
Phoenix Old Boys		6	0	0	0	6	
Plough (Slough)	DE	0	0	0	0	0	
Pulse Sports Therapy	DE	0	0	0	0	0	
Ramgarhia Lions		1	0	0	0	1	
Real Langley	DE	0	0	0	0	0	
Real Milan		1	0	0	0	1	
Riching Park		1	0	0	0	1	
Rising Sun		1	0	0	0	1	
Rose & Crown Rovers	DE	0	0	0	0	0	
RTR		1	0	0	0	1	
SA Stainash		1	0	0	0	1	
Shamrocks		1	0	0	0	1	
Shepherd Hut 2009		1	0	0	0	1	
Shooting Staines		2	0	0	0	2	

Slough

Club Name	Status	10/11 Teams					Charter Standard 10/11
		Adult	Youth All Formats	Mini	Foreign * Team Count	Total This LA	
SHYAM	DE	0	0	0	0	0	
Signcraft		0	1	0	0	1	
Singh Sabha Slough		2	0	0	0	2	
Slough All Stars		1	0	0	0	1	
Slough Central Panthers		1	0	0	0	1	
Slough Central United		0	3	0	0	3	
Slough Community Leisure		1	0	0	0	1	
Slough Crusaders		0	1	0	0	1	Charter
Slough Irish Society Centre		1	0	0	0	1	
Slough Irish Youth		0	2	0	0	2	Charter
Slough Laurencians		2	0	0	0	2	
Slough Sharks		1	0	0	0	1	
St Peters Iver		1	3	2	0	6	
Stoke Green		2	0	0	0	2	
Stoke Poges		1	0	0	0	1	
Stoke Poges Dog & Pot	DE	0	0	0	0	0	
Stoke Poges Dons		1	0	0	0	1	
Stoke Road Legion		1	0	0	0	1	
Swans		2	0	0	0	2	
Taplow Boys		0	2	1	0	3	
Taplow United (Saturday)		3	0	0	0	3	Comm.
Taplow United Colts		0	2	0	0	2	Comm.
Taplow United Youth		0	8	2	0	10	Comm.
Thorney Park Rangers		1	0	0	0	1	
UCB	DE	0	0	0	0	0	
Upton Lea		1	0	0	0	1	
Upton Park Rangers		1	0	0	0	1	
Upton Youth		0	1	1	0	2	
UT United		1	0	0	0	1	
West Drayton Marauderz		1	0	0	0	1	
Wexham Park Rangers		1	0	0	0	1	

Slough

Club Name	Status	10/11 Teams					Charter Standard 10/11
		Adult	Youth All Formats	Mini	Foreign Team Count *	Total This LA	
Wexham Royals		1	0	0	0	1	
Wexham United		0	4	1	0	5	
Wheatsheaf (CS)		1	0	0	0	1	
Willow Wanderers		1	0	0	0	1	
Windsor Saints		1	0	0	0	1	
Wsm Celtic		1	0	0	0	1	
Wycombe Wanderers FC	DE	0	0	0	0	0	
York Club		1	0	0	0	1	
Totals		109	85	38	2	232	

* Foreign Team Count - these are the teams affiliated to Slough clubs, but playing in neighbouring Local Authorities. These teams are **not** added to the team total for this authority.

APPENDIX 2

This section provides a brief overview of Slough's population structure and characteristics.

Demographic Profile

According to the mid-2009 population estimate data from the Office for National Statistics, Slough has a population of 128,387. 63,102 of Slough's population, 49.2%, are female compared to a national average of 50.8%.

For statistical purposes we define the number of people in a district who could potentially play football as the "relevant population". For Adult teams, the relevant population is males and females aged between 16 and 44 years, for Youth teams (all formats), the relevant population is males and females aged between 10 and 18 years, and for Mini Soccer, the relevant population is males and females aged 6 to 9 years. Table 6 outlines the numbers and percentages of the population in Slough for the population age groups relevant to football.

Table 6: Slough relevant population age groups

Population Group	Slough Relevant Population		% of Slough Relevant Population		England Relevant Population	
	Male	Female	Male	Female	Male	Female
Adult - Aged 16 to 44 Years	30,491	29,188	39.3%	37.6%	36.6%	36.0%
Youth - Aged 10 to 18 Years	6,052	5,803	7.8%	7.5%	9.8%	9.3%
Mini Soccer - Aged 6 to 9 Years	6,012		7.8%		8.5%	

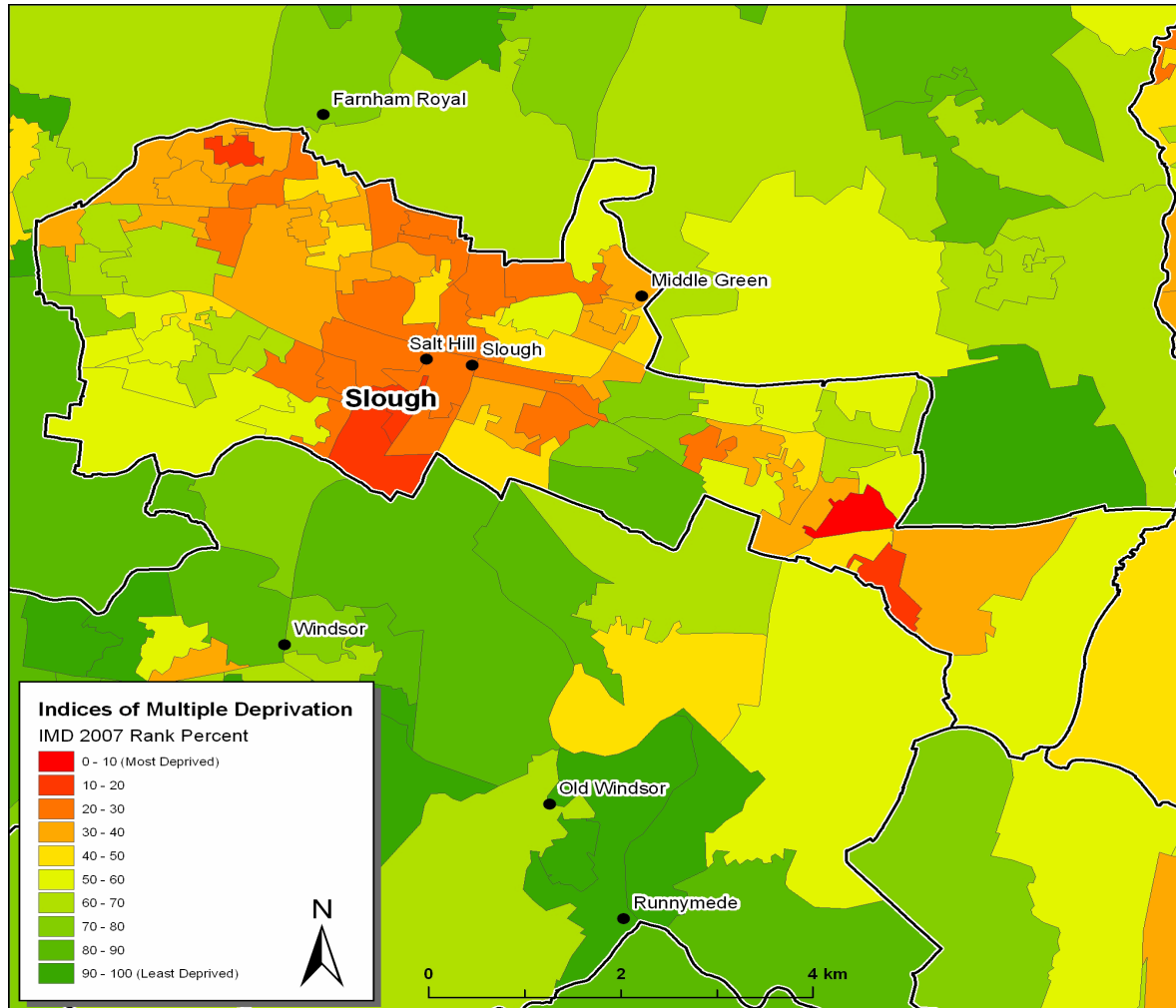
In Slough 38.7% of the population come from Ethnic Minority (EM) groups, which is higher than that of England as a whole at 8.8%. The largest EM group in the authority is Indian at 15.0%, followed by Pakistani at 12.2%; the corresponding national averages are 1.9% and 1.2% respectively. (Source: 2001 Census)

Slough

Index of Multiple Deprivation (IMD)

The Index of Multiple Deprivation (2007) provides a nationally accepted means by which to identify the levels of deprivation in England.

Figure 5: Slough IMD ranking indicating main settlements



Active People Survey Data

The Active People Survey (APS), commissioned by Sport England, is the largest sports survey undertaken in Europe. The survey provides detail on the level of participation in sport and physical activity by adults (16+) for each Local Authority in England. This data is based on a minimum sample size of 500 interviews in each area.

The data from APS 4 (October 2009 - October 2010) provides:

- 1) Percentage of the adult population participating in football for at least 30 minutes at least once a month.
- 2) Percentage of the adult population participating in football for at least 30 minutes at least once a week.

The results for Slough are shown below (where blank this indicates that data is unavailable due to small sample size):

	APS 4 - Football	
	1 x month	1 x week
Slough	9.6%	7.2%
National Average	7.33%	4.96%

This football specific data can be compared against general participation across all sports in the Local Authority area by accessing the following link to Local Sport Profile data http://www.sportengland.org/research/local_sport_profiles.aspx

Please refer to the Football Participation Reports User Guide 2010/11 for more detail on the interpretation of this data. The guide can be found at: https://www.fadml.com/C13/Football_Development/default.aspx and will be available from 1st March 2011.

National Statistics 2001 Area Classification for Local Authorities

Additional information can be found on the Area Classification clusters that were used to group Local Authorities using the website below:

http://www.statistics.gov.uk/about/methodology_by_theme/area_classification/la/default.asp

