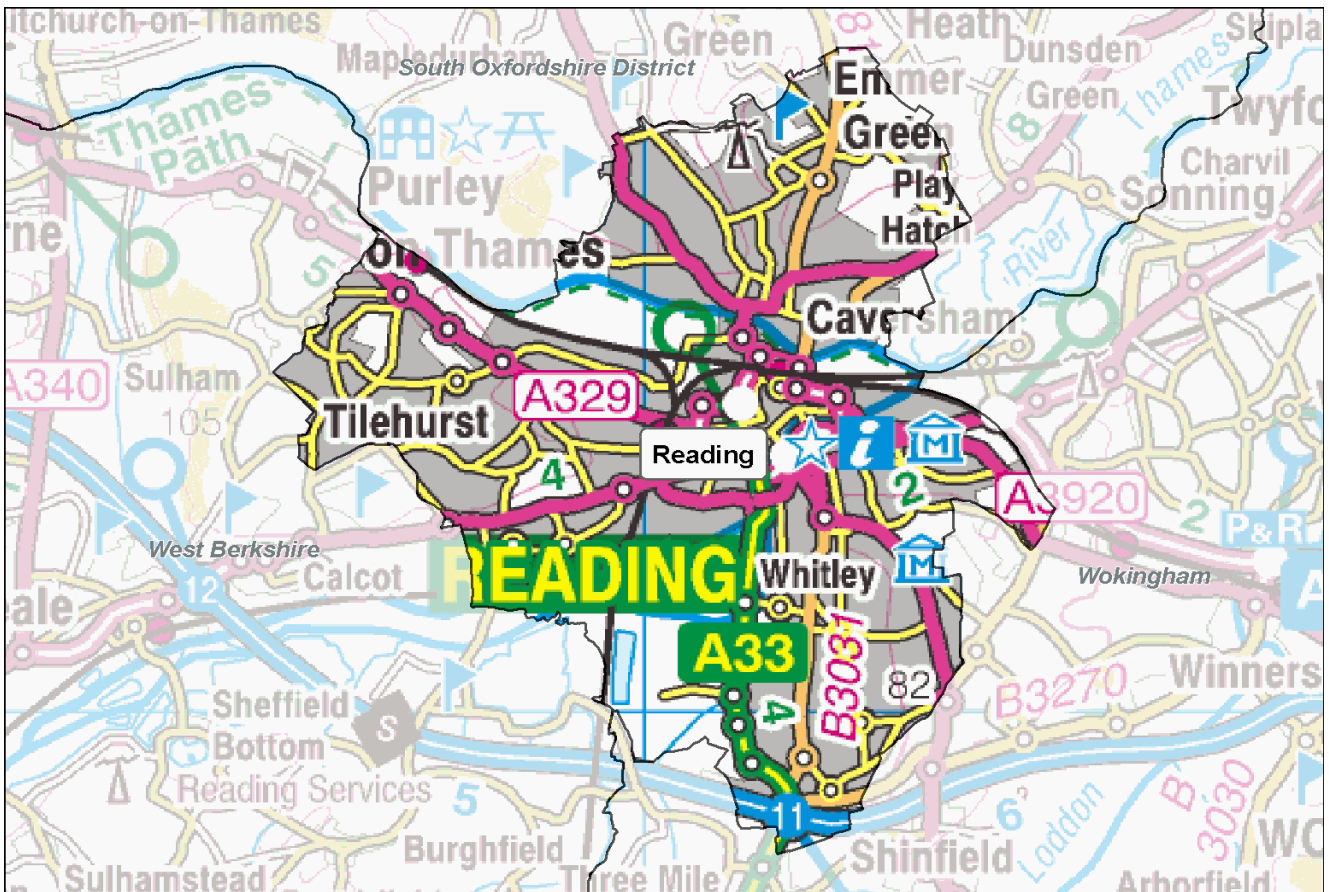


Football Participation Report:

Reading

Season 10/11



INTRODUCTION

Football has the highest participation of any team sport in the country - there are over 129,000 affiliated football teams in England, (10/11). The National Game Strategy is The FA's plan for grassroots football between 2008 and 2012 and within this, there is an ambition to grow the game by a further 20,500 teams by 2012.

Over the past 8 years, The FA has invested in significant improvements to the affiliation process which has led to the development of the County Administration System (CAS). CAS allows us to chart participation within each local authority area and this report reflects the latest participation data in your particular area. These reports are freely available and it is hoped that they will be used by local authorities, developers, clubs, leagues and other interested parties to advise current and proposed activities and investments around the game at the local level.

The FA will welcome support and advice from local partners who are similarly interested in sustaining and developing the game. Since the production of the Season 09/10 Local Area Data Reports, significant effort has been put into improving data from the County Administration System (CAS). **In some instances, this has resulted in changes to the 10/11 totals compared to how they appeared in the last version of the report.**

Whilst the data provided is robust it is not claimed to be 100% accurate. There are a number of reasons why some errors will exist and it is critical that errors are reported back to The FA and/or CFAs so we can continually improve the quality of the information available. Please report any errors or omissions to either your local County FA or Data@TheFA.com.

Each year, the County Football Associations and The Football Association will work hard to improve methods for capturing data. As a result, in some circumstances, there may appear to be shifts in participation which are directly due to refined/improved data entry rather than actual growth or decline. Please ensure that in assessing trends, you take advice from your respective County FA.

Changes in this version:

1. Population Figures updated to Mid 2009 estimates.
2. Active people data updated and taken from APS4.
3. Introduction of Youth - All Formats Category which includes:
 - a) U11 to U18 football of Male, Female and Mixed genders (mixed is included into male category for the purposes of this report).
 - b) 3v3, 4v4, 5v5, 6v6, 7v7, 9v9 and 11v11 team categories.
4. Further refinement of specific playing locations of teams (this will have resulted in some teams being reallocated into new Local Authority areas).
5. Improved validation of small sided teams (including affiliated and currently non affiliated teams).

This year a User Guide has also been produced in order to provide additional support in analysing the data, and it is recommended that this document is referred to alongside this report. The guide can be found at: https://www.fadml.com/C13/Football_Development/default.aspx and will be available from 1st March 2011.

FOOTBALL KEY FACTS - Reading

Demographics

- Reading has a population of **151,807** (Mid year estimate, Office for National Statistics, 2009) and is expected to grow to **163,800** by 2018 (Office for National Statistics, 2008).
- **16.4%** of the population in Reading come from Ethnic Minority communities compared to a national figure of **8.78%** (Census, 2001).
- **4.5%** of the adult population (16+) participate in football for at least 30 minutes once per week, as compared to a national average of **4.96%** (Sport England Active People Survey, 2010).

Clubs and Teams

- Reading has a total of **136** affiliated clubs with a total of **551** teams of which **506** play in Reading. There are also **125** small sided teams in Reading making a total of **631** teams.
- Of the **631** teams operating in Reading, **150 (23.8%)** are adult teams, **232 (36.8%)** are youth teams (all formats), **124 (19.7%)** are Mini-Soccer teams and **125 (19.8%)** are small sided.
- **86.2%** or **307** of the **356** Youth and Mini-soccer teams play in a club that has achieved a Charter Standard Award as compared to a national average of **70.4%**.
- The number of teams **has decreased by 21 teams** overall in Reading from season 09/10 to season 10/11.

This comprises:

- a decrease of 13 adult teams.
- an increase of 31 youth teams (all formats).
- an increase of 4 Mini-Soccer teams.
- a decrease of 43 small sided teams.

Reading

Conversion Rates

The following table and graphs show football conversion rates in the authority compared to Regional and National rates. These are calculated by comparing the number of persons playing football to the relevant population age group.

We estimate the number of individuals playing football by multiplying the number of teams by the average number of players involved in the different forms of football. We assume the following:

- 18 players are involved in an 11-a-side squad
- 10 players in a Mini-Soccer team squad
- 12 players in a 9 v 9 small-sided team squad
- 9 players in a 7 v 7 small-sided team squad
- 8 players in 6 v 6 and 5 v 5 small-sided team squads
- 6 players in a 4 v 4 small-sided team squad

These numbers are then expressed as a proportion of the relevant population. This creates a percentage of the population at each age group involved in playing football, called a 'conversion rate'. We can then compare these conversion rates to Regional and National averages.

Ages 5 to 44, male and female, of the local area population have been used to calculate the conversion rates on this page.

Table 1: Teams, players and conversion rates for Reading, South East and England

	Adult 11-a-side		Youth All Formats		Mini- Soccer	Adult Small Sided	All Forms
	Male	Female	Male	Female	Mixed	Male	Total
Reading							
No of Teams 10/11	145	5	193	39	124	125	631
No of Teams 09/10	153	10	175	26	120	130	652
Variance	-5.2%	-50.0%	10.3%	50.0%	3.3%	-3.9%	-3.2%
Players 10/11	2,610	90	3,318	588	1,240	1,000	8846
Players 09/10	2,295	150	2,625	390	1,200	1,040	7700
Conversion Rate 10/11	6.4%	0.2%	56.1%	9.6%	21.3%	2.5%	9.3%
Conversion Rate 09/10	6.6%	0.5%	53.7%	8.1%	17.5%	3.0%	9.2%
Variance	-0.2%	-0.2%	2.4%	1.5%	3.9%	-0.5%	0.0%
South East							
Conversion Rates 10/11	5.5%	0.2%	23.5%	2.3%	9.6%	1.7%	6.0%
Conversion Rates 09/10	4.8%	0.2%	26.6%	2.0%	9.1%	2.2%	5.8%
Variance	0.7%	0.0%	-3.1%	0.3%	0.5%	-0.4%	0.2%
England							
Conversion Rate 10/11	5.4%	0.3%	21.4%	2.3%	9.1%	1.8%	5.9%
Conversion Rate 09/10	4.8%	0.2%	23.3%	2.0%	8.0%	1.9%	5.4%
Variance	0.6%	0.0%	-1.9%	0.3%	1.1%	-0.1%	0.5%

Notes: All conversion rate figures in this table are subject to rounding, so whilst the seasonal figures in the table may not imply a change, the variance may indicate a drop or increase as the 4th January data cut figures may differ.

Reading

Figure 1: Conversion rates by type of football for Reading 10/11 as set against regional and national averages.

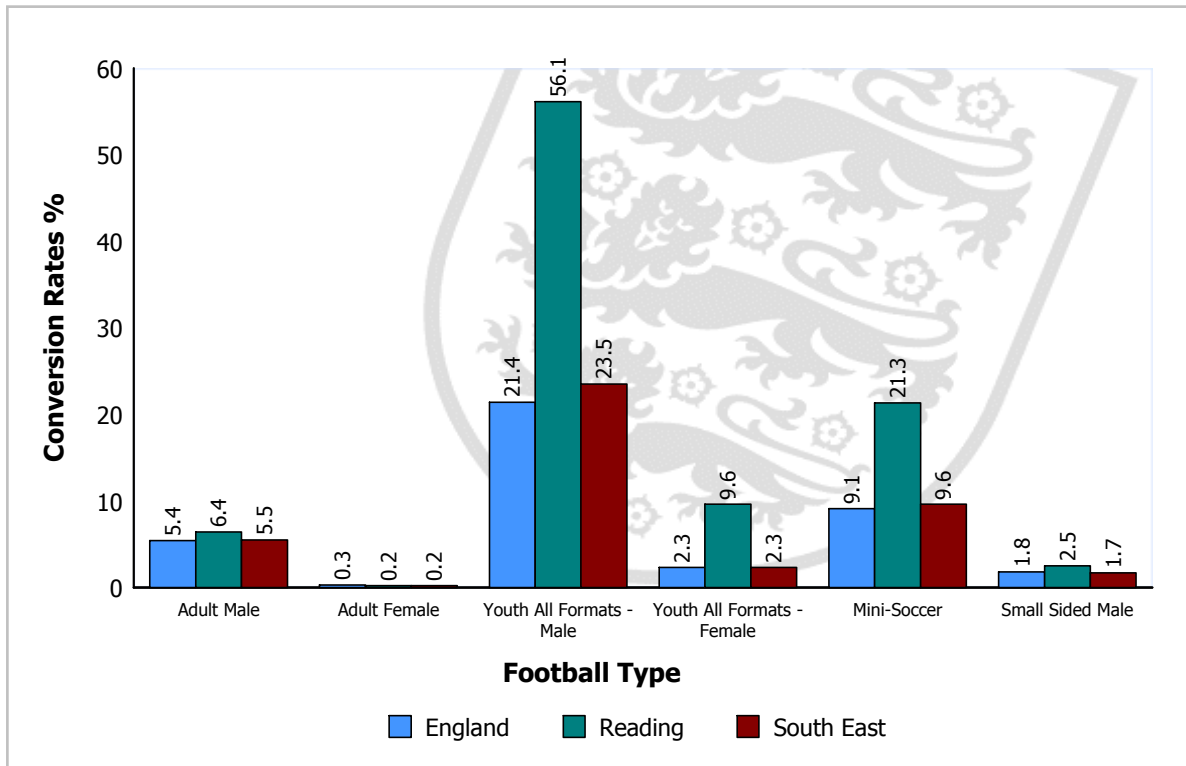
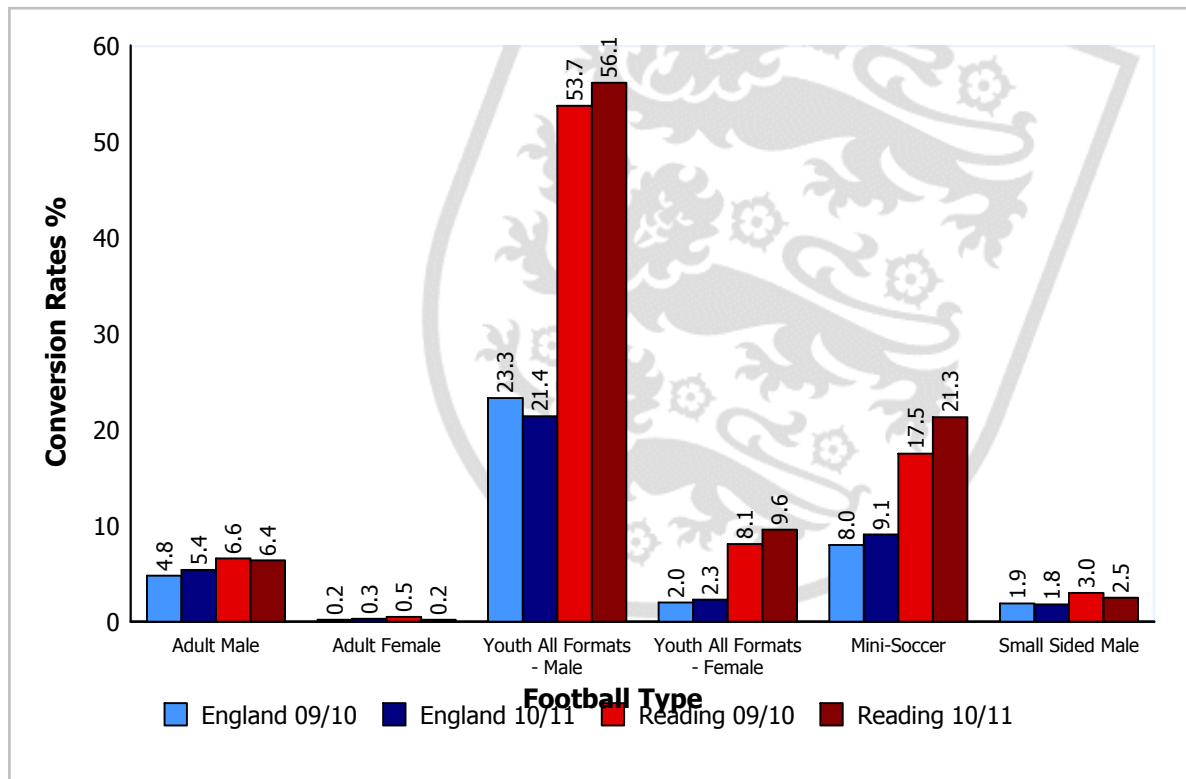


Figure 2: Conversion rate trends for different football types for Reading 09/10 and 10/11 as set against national averages.



Please Note: Season 09/10 figures for Youth - All Formats reflect Youth 11 v 11 only.

Reading

Local Authority Comparison of Conversion Rates

A comparison of conversion rates of Local Authorities can be made between those similar in nature by utilising the National Statistics 2009 Area Classification of Local Authorities (provided by the Office for National Statistics). The classification groups Local Authorities based on population characteristics.

Table 2 below shows the conversion rates for Reading compared to those most similar to it, that is, members of the same subgroup:

Bromley, Hillingdon, Kingston upon Thames, Richmond upon Thames, Sutton, Watford

Table 2: Comparison of Local Authorities in the same subgroup as Reading.

Football Type		Conversion Target ¹	Reading Conversion Rate	Variance	Growth Potential ²
Adult 11-a-side	Male	5.8	6.4	0.6	0
	Female	0.3	0.2	0.0	2
Youth ² (all formats)	Male	31.2	56.1	24.9	0
	Female	3.8	9.6	5.8	0
Mini-Soccer	Mixed	12.1	21.3	9.2	0
Adult Small Sided	Male	2.7	2.5	-0.2	12

¹ The target is the value of the upper quartile (75th Percentile) of conversion rates of all local authorities in the same subgroup. The conversion target is calculated for each type of football.

² Growth Potential represents the number of teams for each football type that the local authority would need to develop to reach the conversion target value. For Youth (all formats) the growth potential has been calculated on an average number of players across all formats.

Local Authorities are encouraged to discuss growth potential targets with their County Development Manager to determine a realistic programme of intervention, supported by The FA, capable of increasing participation over an agreed period.

Where the Local Authority has participation rates already above the targets consideration should be given as to how these rates can be sustained long term.

CLUBS

Reading Clubs

- In Reading the club to team ratio is 1:3.7 (i.e. each club runs on average 3.7 teams). This compares to a national ratio of 1:2.9 and a regional ratio of 1:3.3.
- 41 of the youth clubs in Reading run youth 11-a-side teams only and do not have a mini-soccer team.
- There are 18 clubs fielding both youth and adult teams.
- 81.6% of clubs in Reading have adult teams, compared to national and regional averages of 72.5% and 73.7% respectively.
- 75.7% of adult-only clubs in Reading have only one team compared to the national average of 76.0%.

Appendix 1 shows Reading based clubs with numbers of associated teams for each form of football during season 10/11. Finally, it shows the status of clubs that have been awarded The FA Charter Standard award and the level of that award.

Charter Standard

Of the 136 clubs in Reading, 28 have achieved Charter Standard. The level of status obtained by these clubs is outlined in Table 3.

Table 3: Clubs with Charter Standard in Reading

Status	Reading		England	
	Number	Percentage	Number	Percentage
Community Club	2	1.5%	515	1.7%
Development Club	6	4.4%	521	1.8%
Charter Standard	20	14.7%	4379	14.7%
Total	28	20.6%	5415	18.2%

In terms of teams, 86.2% of youth and mini-soccer teams play within a club of Charter Standard status. This compares to a national average of 70.4% with a National Game Strategy target of 75% of youth and mini-soccer teams playing within a Charter Standard Club by 2012.

Reading

TEAMS

Reading Teams

- There are a total of 506 teams playing competitive football in Reading excluding small-sided teams.
- According to the CAS data, there are 44 female teams playing in Reading. This is 8.7% of the total number of teams.
- The peak youth age is U11, with 43 teams playing at this level.

Table 4 shows the number of Reading based teams for each form of football.

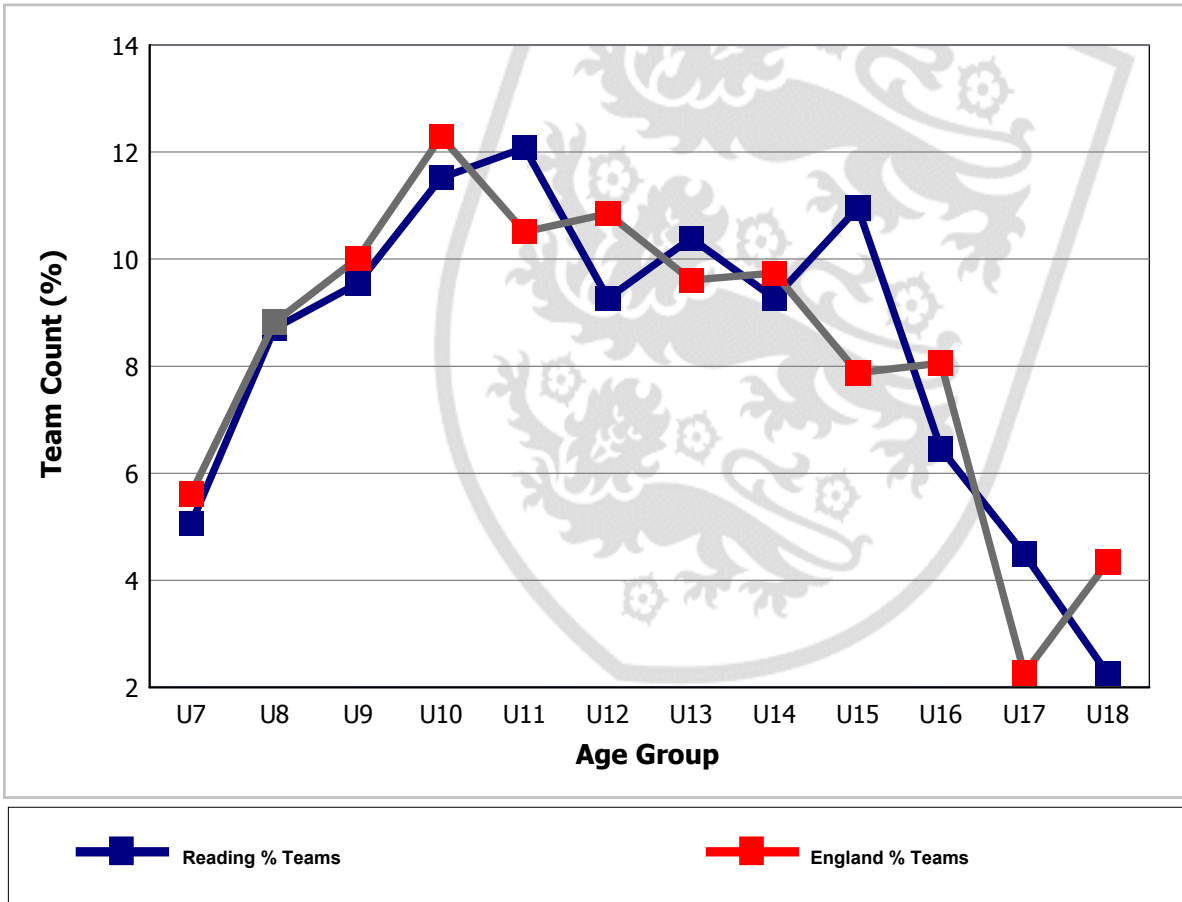
Table 4: Number of teams at each age group

Age Group	Total No. of Teams	No. of Mixed Teams	No. of Male Teams	No. of Female Teams
U7	18	18	0	0
U8	31	31	0	0
U9	34	34	0	0
U10	41	41	0	0
U11	43	0	37	6
U12	33	0	29	4
U13	37	0	28	9
U14	33	0	30	3
U15	39	0	31	8
U16	23	0	22	1
U17	16	0	10	6
U18	8	0	6	2
U19	1	0	1	0
Open Aged	148	0	143	5
Veterans	1	0	1	0
Totals	506	124	338	44

Reading

The following figure plots the change in the percentage of youth teams across age groups in Reading and highlights a peak number of teams in the U11 age group. Where there is no line on the graph for 'Teams within LA %', there are no youth teams playing in the Local Authority. The national percentages for each age group are also included for comparison.

Figure 4: Individual youth teams as a proportion of all U18 teams in Reading



Reading

LEAGUES

Leagues with Reading Teams

There are 32 leagues containing teams from Reading (see table 5).

- In total 20 of these leagues are adult leagues.
- There are 17 teams in Reading that have not been assigned to a league. Where teams have not been assigned to a league, this data could potentially be highlighting teams playing in 'friendlies' only or it could be highlighting data missing from CAS.

Table 5 summarises the main coverage of football in Reading, in respect of the age ranges of teams, numbers of teams and leagues in which they participate.

Table 5: League structures in Reading

League	Age Group	No. of Teams in League	No. of Reading Teams in League	% of Teams in League Playing in Reading	Charter Standard and Respect
Allied Counties Youth Football League	U18	40	1	2.5	
Basingstoke & District Saturday Football League	Open Aged	34	1	2.9	Respect
Basingstoke & District Sunday Football League	Open Aged	36	1	2.8	Respect
Berkshire Youth Development League	U7	19	10	52.6	Respect
Berkshire Youth Development League	U8	25	19	76.0	Respect
Berkshire Youth Development League	U9	36	24	66.7	Respect
Berkshire Youth Development League	U10	38	25	65.8	Respect
Berkshire Youth Development League	U11	36	24	66.7	Respect
Berkshire Youth Development League	U12	25	20	80.0	Respect
Berkshire Youth Development League	U13	30	18	60.0	Respect
Berkshire Youth Development League	U14	22	14	63.6	Respect
Berkshire Youth Development League	U15	13	9	69.2	Respect
Berkshire Youth Development League	U16	5	3	60.0	Respect
BOBI	U16	3	1	33.3	CSL, Respect
BOBI	Open Aged	26	1	3.8	CSL, Respect
Bracknell Town & District Sunday League	Open Aged	56	3	5.4	Respect
Development League	U7	1	1	100.0	
Development League	U8	3	1	33.3	
Development League	U10	3	2	66.7	
Development League	U11	3	3	100.0	

Reading

League	Age Group	No. of Teams in League	No. of Reading Teams in League	% of Teams in League Playing in Reading	Charter Standard and Respect
Development League	U12	1	1	100.0	
Development League	U13	1	1	100.0	
Development League	U14	1	1	100.0	
East Berks Football League	Open Aged	67	1	1.5	
East Berks Junior League	U15	2	1	50.0	
East Berkshire Youth Football League	U7	27	3	11.1	Respect
East Berkshire Youth Football League	U8	39	1	2.6	Respect
East Berkshire Youth Football League	U9	48	2	4.2	Respect
East Berkshire Youth Football League	U10	61	3	4.9	Respect
East Berkshire Youth Football League	U11	53	6	11.3	Respect
East Berkshire Youth Football League	U12	66	4	6.1	Respect
East Berkshire Youth Football League	U13	61	7	11.5	Respect
East Berkshire Youth Football League	U14	38	7	18.4	Respect
East Berkshire Youth Football League	U15	35	5	14.3	Respect
East Berkshire Youth Football League	U16	31	5	16.1	Respect
East Berkshire Youth Football League	U17	18	2	11.1	Respect
East Berkshire Youth Football League	U18	14	2	14.3	Respect
East Berkshire Youth Football League	Open Aged	4	2	50.0	Respect
English Colleges Football League	U18	19	2	10.5	
English Colleges Football League	U19	80	1	1.3	
English Colleges Football League	Open Aged	70	1	1.4	
Football Conference Youth League and Cup	U18	24	1	4.2	
Football League	Open Aged	77	1	1.3	
Friendlies/Tournaments	U7	9	1	11.1	
Friendlies/Tournaments	U8	6	1	16.7	
Friendlies/Tournaments	U11	2	1	50.0	
Friendlies/Tournaments	U12	4	1	25.0	
Friendlies/Tournaments	U15	3	1	33.3	
Goals (Reading)	Open Aged	2	2	100.0	
Goals Soccer Centre PLC	Open Aged	1	1	100.0	
Hampshire Premier Football League	Open Aged	33	1	3.0	Respect

Reading

League	Age Group	No. of Teams in League	No. of Reading Teams in League	% of Teams in League Playing in Reading	Charter Standard and Respect
Hellenic Football League	Open Aged	91	1	1.1	Respect
Jack Taylor (TRS) (Reading) Sunday League	Open Aged	2	1	50.0	
Newbury & District Sunday League	Open Aged	29	6	20.7	Respect
North Berks League	Open Aged	59	2	3.4	Respect
North East Hants Youth Football League	U12	53	2	3.8	
North East Hants Youth Football League	U13	59	3	5.1	
North East Hants Youth Football League	U14	47	2	4.3	
North East Hants Youth Football League	U15	49	2	4.1	
North East Hants Youth Football League	U16	35	4	11.4	
North East Hants Youth Football League	U17	28	1	3.6	
Peter Houseman Girls Youth League	U14	2	1	50.0	
Peter Houseman Youth League	U7	24	1	4.2	Respect
Peter Houseman Youth League	U8	25	2	8.0	Respect
Peter Houseman Youth League	U9	30	3	10.0	Respect
Peter Houseman Youth League	U10	34	6	17.6	Respect
Peter Houseman Youth League	U11	26	1	3.8	Respect
Peter Houseman Youth League	U12	29	2	6.9	Respect
Peter Houseman Youth League	U13	21	3	14.3	Respect
Peter Houseman Youth League	U14	29	2	6.9	Respect
Peter Houseman Youth League	U15	15	2	13.3	Respect
Peter Houseman Youth League	U16	8	3	37.5	Respect
Reading & District Sunday League	Open Aged	121	90	74.4	
Reading Football League	Open Aged	69	25	36.2	Respect
South Chiltern Minor League	U7	3	2	66.7	CSL, Respect
South Chiltern Minor League	U8	4	3	75.0	CSL, Respect
South Chiltern Minor League	U9	6	3	50.0	CSL, Respect
South Chiltern Minor League	U10	6	4	66.7	CSL, Respect
South Chiltern Minor League	U11	15	7	46.7	CSL, Respect
South Chiltern Minor League	U12	9	2	22.2	CSL, Respect
South Chiltern Minor League	U13	12	5	41.7	CSL, Respect
South Chiltern Minor League	U14	8	5	62.5	CSL, Respect

Reading

League	Age Group	No. of Teams in League	No. of Reading Teams in League	% of Teams in League Playing in Reading	Charter Standard and Respect
South Chiltern Minor League	U15	30	16	53.3	CSL, Respect
South Chiltern Minor League	U16	9	5	55.6	CSL, Respect
South Chiltern Minor League	U17	20	13	65.0	CSL, Respect
Southern Region Women's Football League	Open Aged	22	3	13.6	
Surrey County Womens & Girls F.L.	U14	22	1	4.5	Respect
Surrey County Womens & Girls F.L.	U16	19	1	5.3	Respect
Surrey County Womens & Girls F.L.	U18	15	1	6.7	Respect
Thames Valley Counties Womens League	Open Aged	39	2	5.1	Respect
Wycombe & District Football League	Open Aged	31	2	6.5	Respect
Wycombe & South Bucks Minor League	U15	47	2	4.3	Respect
Count of Leagues: 32					

Please Note:

- 1). Count of teams may differ from the front page, since some teams may not have a league allocated.
- 2). CSL - indicates Charter Standard League.
- 3). If a league appears more than once for an agegroup, it may be that teams have been applied to different/duplicated league entities.

SUMMARY

This report has identified the status of football in Reading for 10/11 season. The report is part of an ongoing process that will allow the data to be updated and used in the development of football locally.

In closing The Football Association would like to thank you for any feedback that you may have on this report. Please convey any errors or omissions to either your local County FA or Data@TheFA.com.

Reading

APPENDIX 1

Table 6 - Summary of football clubs in Reading

DE - Club existed in previous season, but not in the current season.

SS - Refers to Clubs with only Small Sided teams

Club Name	Status	10/11 Teams					Charter Standard 10/11
		Adult	Youth All Formats	Mini	* Foreign Team Count	Total This LA	
116 Exiles		1	0	0	3	1	
Abbey Rangers	DE	0	0	0	0	0	
Ac Winnersh		1	0	0	0	1	
AFC Aldermaston		3	6	1	0	10	
AFC Burghfield		2	0	0	0	2	
AFC Crowthorne		0	2	1	0	3	Charter
AFC Earley		1	0	0	0	1	
AFC Palmer		1	0	0	0	1	
AFC Southfield		1	0	0	0	1	
Arborfield Apaches		0	3	0	0	3	Charter
Ardmore	DE	0	0	0	0	0	
Atletico Priestwood		1	0	0	0	1	
Aura		1	0	0	0	1	
Bantam		1	0	0	0	1	
Barton Rovers	DE	0	0	0	0	0	Charter
BCSA (Burghfield)	DE	0	0	0	0	0	
Berkshire County Sports		2	0	0	0	2	
Bethel United		1	0	0	0	1	
Black Horse		1	0	0	0	1	
BOTL (Bottom of the League)	DE	0	0	0	0	0	
Bourne Patriots United	DE	0	0	0	0	0	
Bradfield		1	0	0	0	1	
Brewery Tap		1	0	0	0	1	
Bucklebury		1	0	0	0	1	
Bucklebury Wolves		0	0	2	0	2	
Bulmershe Old Boys		1	0	0	0	1	
Bulmershe Spartans	DE	0	0	0	0	0	

Reading

Club Name	Status	10/11 Teams					Charter Standard 10/11
		Adult	Youth All Formats	Mini	Foreign * Team Count	Total This LA	
Burghfield		2	15	8	0	25	Devel.
Calcot Hawks		0	3	3	0	6	Charter
Calcot Lokomotiv		1	0	0	0	1	
Caversham AFC		1	28	8	0	37	Comm.
Caversham Park Village		1	0	0	0	1	
Caversham Trents		0	6	7	0	13	
Celtic Rangers	DE	0	0	0	0	0	
Chalfont Park		2	0	0	0	2	
Coley Park		1	0	0	0	1	
County (Reading)		1	0	0	0	1	
Crown Inn (Theale)		1	0	0	0	1	
Crowthorne Sports & Social (2010)		1	0	0	0	1	
CSA 07		0	2	4	0	6	
Cubin Linkz	DE	0	0	0	0	0	
Curzon		1	0	0	0	1	
Dee Road Rangers		1	0	0	0	1	
Deportivo La Star		1	0	0	0	1	
Diamond Black		2	0	0	0	2	
Earley Home Guard		1	0	0	0	1	
Earley United		1	0	0	0	1	
Eastern Rangers		1	1	0	0	2	
Eldon Celtic		3	15	4	0	22	Charter
Emmer Green (Sunday)		1	0	0	0	1	
Englefield Eagles	DE	0	0	0	0	0	
FC Berksalona		1	0	0	0	1	
Fc Holyport		0	3	0	0	3	Charter
FC Ole		1	0	0	0	1	
FC Whitley		1	0	0	0	1	
Forest		1	0	0	0	1	
Forest View		1	0	0	0	1	
Fox & Hounds (Reading)		2	0	0	0	2	

Reading

Club Name	Status	10/11 Teams					Charter Standard 10/11
		Adult	Youth All Formats	Mini	Foreign * Team Count	Total This LA	
Goonies		1	0	0	0	1	
Grosvenor		1	0	0	0	1	
Hambleden		2	1	0	0	3	
Highmoor/Ibis		5	0	0	0	5	
Hobnob		1	0	0	0	1	
Holybrook		0	1	0	0	1	
Hop Leaf		2	0	0	0	2	
Hurst Romans		0	5	5	0	10	Charter
Imaan		1	0	0	0	1	
JMA (Reading)		0	1	0	0	1	
Kennet Vale		1	0	0	0	1	
Kennet Valley		1	12	4	0	17	Charter
Kickz		1	0	0	0	1	
Kings United	DE	0	0	0	0	0	
Lakeside		1	0	0	0	1	
Lambourn Sports		3	0	0	0	3	
Leadcraft Tilehurst	DE	0	0	0	0	0	
Linear United****MERGED****		1	0	0	0	1	
Loddon Valley Rangers		3	0	0	0	3	
Lower Earley Predators	DE	0	0	0	0	0	
Mapledurham Cavaliers		1	0	0	0	1	
Meadow Rangers		1	0	0	0	1	
Meadway Youth		1	10	3	0	14	Charter
Misfits (Theale)		2	0	0	0	2	
MK College		1	2	0	0	3	
Mod		1	0	0	0	1	
Mortimer		3	0	3	0	6	Devel.
MT Allstars	DE	0	0	0	0	0	
New England		1	0	0	0	1	
North Star Wanderers		1	0	0	0	1	
Pangbourne		2	0	0	0	2	

Reading

Club Name	Status	10/11 Teams					Charter Standard 10/11
		Adult	Youth All Formats	Mini	Foreign * Team Count	Total This LA	
Pangbourne Youth		0	1	2	0	3	
Park Rangers (2009)		1	0	0	0	1	
Park Villa		1	0	0	0	1	
Phoenix (SAS)	SS	0	0	0	0	0	
Pinewood	DE	0	0	0	0	0	Devel.
Pink Ladies	DE	0	0	0	0	0	
Plough (Reading)		1	0	0	0	1	
Polish Social (Sunday)		1	0	0	0	1	
Prospect Pumas		0	2	0	0	2	
Purley		2	0	0	0	2	
Purley Jubilee		1	8	4	0	13	Charter
Purley Park 2009		0	1	0	0	1	
Purple Turtle		1	0	0	0	1	
Q Associates		1	0	0	0	1	
Ras Rovers		1	0	0	0	1	
Reading Allstars JFC		0	1	1	0	2	
Reading College FDC		1	0	0	0	1	
Reading FC		1	2	0	13	3	
Reading Football League	DE	0	0	0	0	0	
Reading Girls		0	8	1	0	9	Devel.
Reading Ladies		1	0	0	0	1	Charter
Reading Powerchair		1	0	0	0	1	
Reading Pumas		0	0	1	0	1	
Reading Rangers Junior		0	8	4	0	12	Charter
Reading Town		2	1	2	0	5	Charter
Reading Town Ladies	DE	0	0	0	0	0	
Reading YMCA		2	0	0	0	2	
Reading Youth	DE	0	0	0	0	0	
Real Reading		1	0	0	0	1	
Resource Reunited	SS	0	0	0	0	0	
RG Athletic		1	0	0	0	1	

Reading

Club Name	Status	10/11 Teams					Charter Standard 10/11
		Adult	Youth All Formats	Mini	Foreign * Team Count	Total This LA	
Richfield Rovers		2	0	0	0	2	
Royal Albion		3	0	0	0	3	
Royal Mail (Reading)****MERGED WITH THEALE	DE	0	0	0	0	0	
Royal Oak Athletic	DE	0	0	0	0	0	
Ruscombe		1	0	0	0	1	
Sawseas	DE	0	0	0	0	0	
Shinfield British Legion		1	0	0	0	1	
Shurlock Rangers	DE	0	0	0	0	0	
Sonning		1	0	0	1	1	
Sonning Sports Social Club		1	0	0	0	1	
Sons of Pitches		1	0	0	0	1	
South Reading		1	9	5	0	15	Charter
South Reading Community Centre		2	0	0	0	2	
Southbank		2	0	0	0	2	
Southcote		1	0	0	0	1	
Southside (Reading)		1	0	0	0	1	
Southurst		0	2	1	0	3	
Spencers Wood	DE	0	0	0	0	0	
Sun Reading	DE	0	0	0	0	0	
Swallowfield Wasps	DE	0	0	0	0	0	Charter
Thames Conservancy	DE	0	0	0	0	0	
Thatcham Tornadoes		1	10	8	2	19	Devel.
Theale Tigers		0	14	3	0	17	Charter
Tilehurst Panthers Girls		0	4	2	0	6	Charter
Tilehurst Titans		1	0	0	0	1	
Tilehurst United		1	0	0	0	1	
Tilehurst Ym		1	0	0	0	1	
Trentonians		1	0	0	0	1	
Unity		3	1	3	0	7	Charter
Valley Park Rangers	DE	0	0	0	0	0	
Victoria Arms (Reading)		2	0	0	0	2	

Reading

Club Name	Status	10/11 Teams					Charter Standard 10/11
		Adult	Youth All Formats	Mini	Foreign Team Count *	Total This LA	
Wargrave Girls		0	4	0	0	4	Charter
Warwick Arms (Reading)		1	0	0	0	1	
West Reading		1	0	0	0	1	
Westfield Athletic		1	0	0	0	1	
Westwood United		2	0	0	0	2	
Westwood Wanderers		1	7	9	0	17	Devel.
Whiteknights		0	7	3	0	10	Charter
Whitley Exiles		0	1	0	0	1	
Whitley Panthers		1	0	0	0	1	
Whitley Tavern		2	0	0	0	2	
Woodley Airfield		1	0	0	0	1	
Woodley Saints		1	10	14	0	25	Comm.
Woodley Town		0	2	0	26	2	Devel.
Woodley Wanderers and Youth		0	10	5	0	15	Charter
Wrightchoice Community Sports Association		3	3	3	0	9	Charter
Totals		150	232	124	45	506	

* Foreign Team Count - these are the teams affiliated to Reading clubs, but playing in neighbouring Local Authorities. These teams are **not** added to the team total for this authority.

APPENDIX 2

This section provides a brief overview of Reading's population structure and characteristics.

Demographic Profile

According to the mid-2009 population estimate data from the Office for National Statistics, Reading has a population of 151,807. 74,635 of Reading's population, 49.2%, are female compared to a national average of 50.8%.

For statistical purposes we define the number of people in a district who could potentially play football as the "relevant population". For Adult teams, the relevant population is males and females aged between 16 and 44 years, for Youth teams (all formats), the relevant population is males and females aged between 10 and 18 years, and for Mini Soccer, the relevant population is males and females aged 6 to 9 years. Table 6 outlines the numbers and percentages of the population in Reading for the population age groups relevant to football.

Table 6: Reading relevant population age groups

Population Group	Reading Relevant Population		% of Reading Relevant Population		England Relevant Population	
	Male	Female	Male	Female	Male	Female
Adult - Aged 16 to 44 Years	40,732	36,961	42.6%	38.7%	36.6%	36.0%
Youth - Aged 10 to 18 Years	5,915	6,126	6.2%	6.4%	9.8%	9.3%
Mini Soccer - Aged 6 to 9 Years	5,815		6.1%		8.5%	

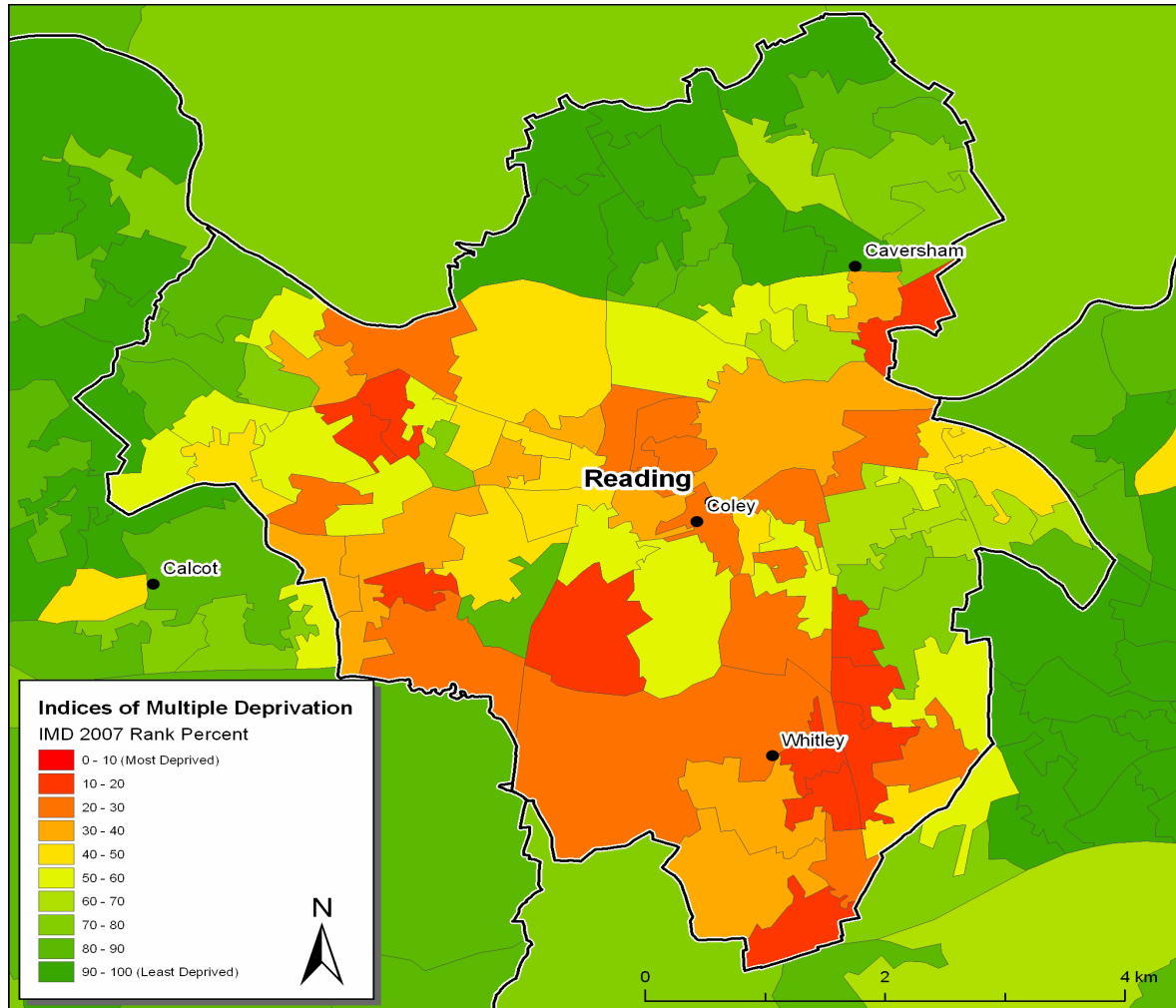
In Reading 16.4% of the population come from Ethnic Minority (EM) groups, which is higher than that of England as a whole at 8.8%. The largest EM group in the authority is Indian at 2.9%, followed by Pakistani at 2.7%; the corresponding national averages are 1.9% and 1.2% respectively. (Source: 2001 Census)

Reading

Index of Multiple Deprivation (IMD)

The Index of Multiple Deprivation (2007) provides a nationally accepted means by which to identify the levels of deprivation in England.

Figure 5: Reading IMD ranking indicating main settlements



Active People Survey Data

The Active People Survey (APS), commissioned by Sport England, is the largest sports survey undertaken in Europe. The survey provides detail on the level of participation in sport and physical activity by adults (16+) for each Local Authority in England. This data is based on a minimum sample size of 500 interviews in each area.

The data from APS 4 (October 2009 - October 2010) provides:

- 1) Percentage of the adult population participating in football for at least 30 minutes at least once a month.
- 2) Percentage of the adult population participating in football for at least 30 minutes at least once a week.

The results for Reading are shown below (where blank this indicates that data is unavailable due to small sample size):

	APS 4 - Football	
	1 x month	1 x week
Reading	7.3%	4.5%
National Average	7.33%	4.96%

This football specific data can be compared against general participation across all sports in the Local Authority area by accessing the following link to Local Sport Profile data http://www.sportengland.org/research/local_sport_profiles.aspx

Please refer to the Football Participation Reports User Guide 2010/11 for more detail on the interpretation of this data. The guide can be found at: https://www.fadml.com/C13/Football_Development/default.aspx and will be available from 1st March 2011.

National Statistics 2001 Area Classification for Local Authorities

Additional information can be found on the Area Classification clusters that were used to group Local Authorities using the website below:

http://www.statistics.gov.uk/about/methodology_by_theme/area_classification/la/default.asp

